

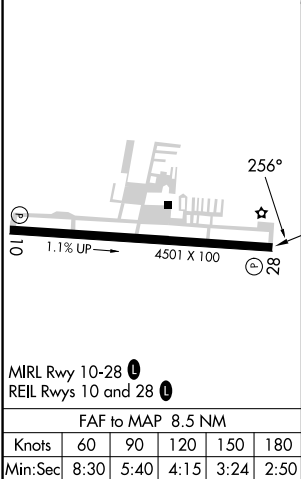
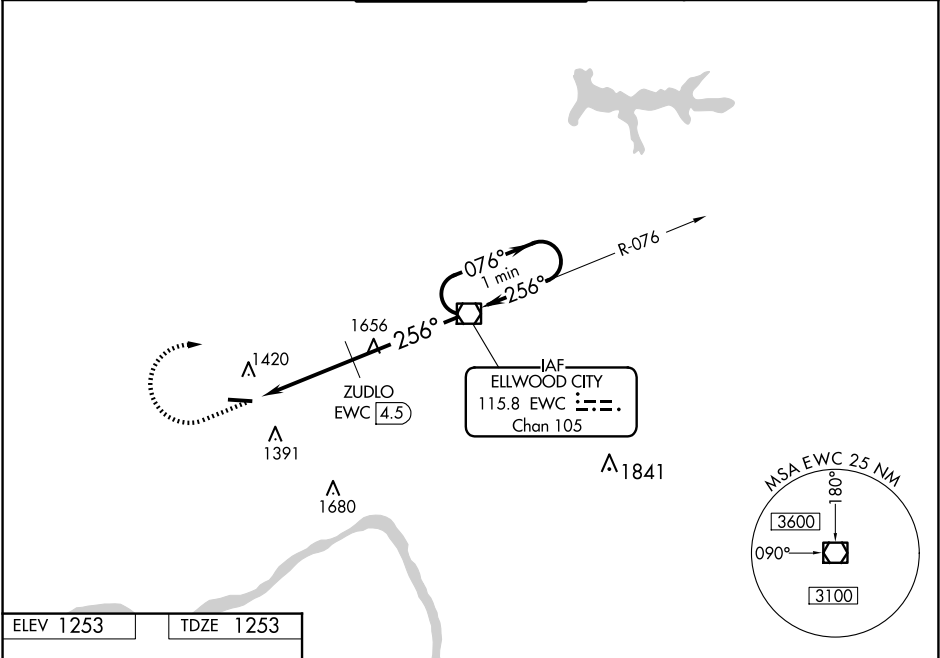
▼



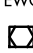
▲

When local altimeter setting not received, use Pittsburgh Intl altimeter setting and increase MDAs 60 feet and visibility Circling Cats A and D ¼ SM and ZUDLO fix minimums S-28 Cats C/D ¼ SM and Circling Cat C ½ SM. Straight-in Rwy 28 NA at night, Circling Rwy 28 NA at night. Rwy 28 helicopter visibility reduction below 1 SM NA.

MISSED APPROACH: Climb to 3000 then right turn direct EWC VOR/DME and hold.

ATIS 118.35	PITTSBURGH APP CON 124.75 338.2	BEAVER COUNTY TOWER ★ 120.3 (CTAF) ①	GND CON 121.8	CLNC DEL 124.85 (when twr closed)
----------------	------------------------------------	---	------------------	---



3000				EWC	EWC VOR/DME	One Minute Holding Pattern
<p>EWC 8.5      ZUDLO EWC 4.5      2060*      076° → 3000 ← 256°</p> <p>* 2120 when using Pittsburgh Intl altimeter setting.</p> <p>4 NM      4.5 NM</p>						
CATEGORY	A		B		C	D
S-28	2060-1 807 (900-1)		2060-1 ¼ 807 (900-1 ¼)		2060-2 ½	807 (900-2 ½)
CIRCLING	2060-2		807 (900-2)		2060-2 ½	807 (900-2 ½)
ZUDLO FIX MINIMUMS (DME REQUIRED)						
S-28	1740-1		487 (500-1)		1740-1 ¾	487 (500-1 ¾)
CIRCLING	1740-1		487 (500-1)		1740-1 ½ 487 (500-1 ½)	1820-2 567 (600-2)