

WAAS CH <b>62821</b> <b>W10A</b>	APP CRS <b>101°</b>	Rwy Idg TDZE <b>1237</b> Apt Elev <b>1253</b>
--	------------------------	---

RNAV (GPS) RWY 10

BEAVER COUNTY (BVI)

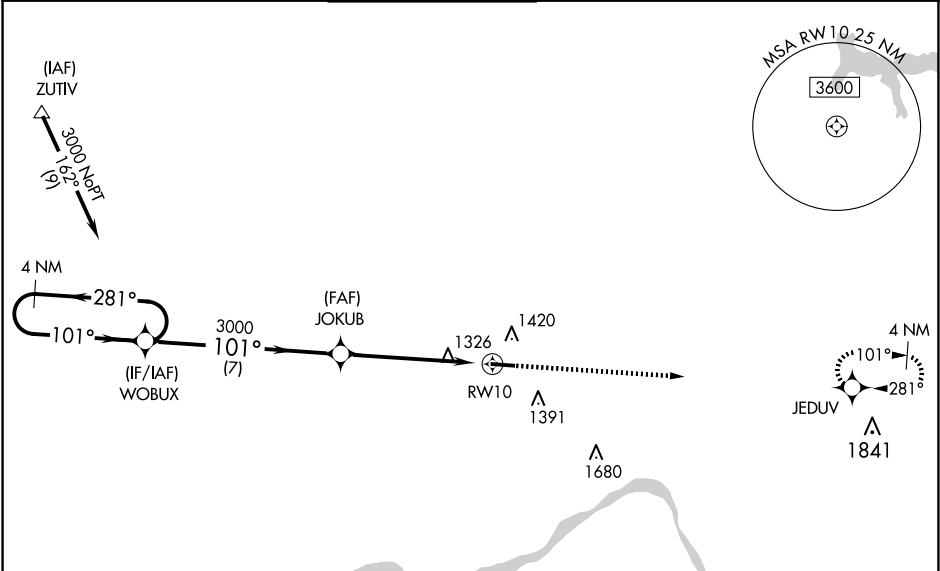
RNP APCH.

▼

Baro-VNAV and VDP NA when using Pittsburgh Intl altimeter setting. For uncompensated Baro-VNAV systems, LNAV/VNAV NA below -17°C (2°F) or above 36°C (96°F). When local altimeter setting not received, use Pittsburgh Intl altimeter setting; increase all DA 50 feet; increase all MDAs 60 feet and visibility LNAV Cats C and D ½ SM. Circling Rwy 28 NA at night. Rwy 10 helicopter visibility reduction below ¾ SM NA.

MISSED APPROACH: Climb to 3000 direct JEDUV and hold.

ATIS <b>118.35</b>	PITTSBURGH APP CON <b>124.75 338.2</b>	BEAVER COUNTY TOWER★ <b>120.3 (CTAF) 0</b>	GND CON <b>121.8</b>	CLNC DEL <b>124.85</b> (when twr closed)
-----------------------	---	---	-------------------------	--



ELEV 1253

TDZE 1237

4 NM Holding Pattern

VGSI and RNAV glidepath not coincident (VGSI Angle 3.00/TCH 42).

3000 JEDUV

\*INAV only.

WOBUX JOKUB

3000

\*1.1 NM to RWY 10

RWY 10

GP 3.00° TCH 55

7 NM 4.4 NM 1.1 NM

CATEGORY	A	B	C	D
LPV DA		1528-1	290 (300-1)	
LNAV/VNAV DA		1514-1	276 (300-1)	
LNAV MDA		1580-1	342 (400-1)	
CIRCLING	1720-1	467 (500-1)	1720-1½ 467 (500-1½)	1820-2 567 (600-2)

MIRL Rwy 10-28 0

REIL Rwy 10 and 28 0