

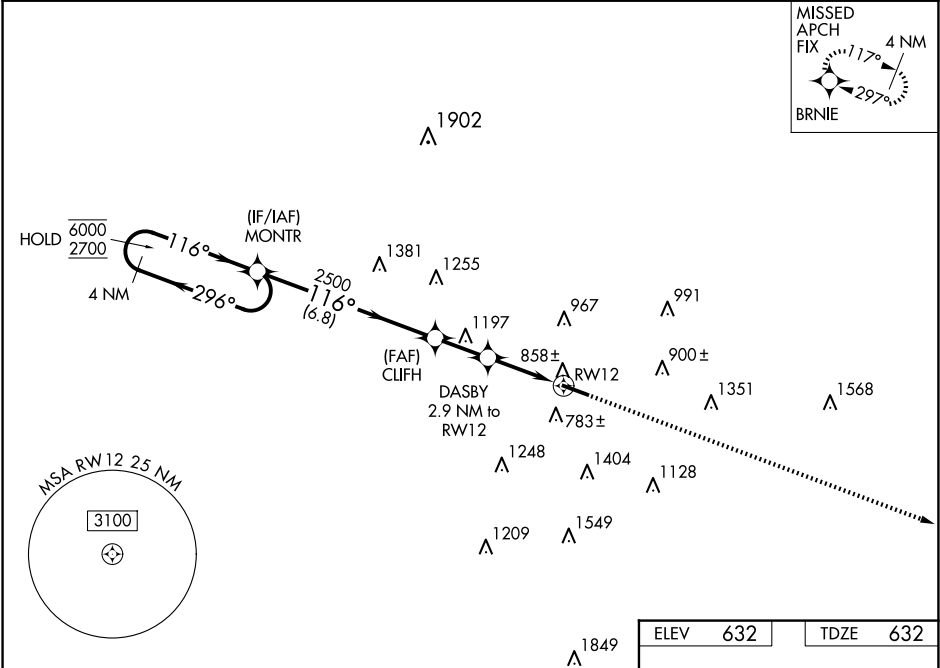


WAAS CH 56600 W12A	APP CRS 116°	Rwy Idg TDZE Apt Elev	5500 632 632
--	------------------------	-----------------------------	---

RNAV (GPS) RWY 12

BUTLER COUNTY RGNL/HOGAN FLD (HAO)

RNP APCH - GPS.			MISSED APPROACH: Climb to 3000 direct BRNIE and hold.
 Rwy 12 helicopter visibility reduction below 3/4 SM NA.			
 For uncompensated Baro-VNAV systems, LNAV/VNAV NA below -18°C or above 49°C.			
ASOS 121.425	CINCINNATI APP CON 121.0 254.25	CLNC DEL 126.25	UNICOM 123.05 (CTAF) 0



4 NM Holding Pattern		VGSI and RNAV glidepath not coincident (VGSI Angle 3.50/TCH 27).		3000 ↑	BRNIE ✧
<div>6000 2700</div> <div>←296° →116°</div> <div>GP 3.50° TCH 40</div>		<div>MONTR</div> <div>CLIFH 2500</div> <div>DASBY 2.9 NM to RW12</div> <div>116°</div> <div>2500</div> <div>1740</div> <div>1.4 NM to RW12</div> <div>RW12</div> <div>6.8 NM</div> <div>2 NM</div> <div>1.6 NM</div> <div>1.4 NM</div>			
CATEGORY	A	B	C	D	
LPV DA	1020-1 $\frac{1}{8}$ 388 (400-1 $\frac{1}{8}$)				
LNAV/ VNAV DA	1108-1 $\frac{3}{8}$ 476 (500-1 $\frac{3}{8}$)				
LNAV MDA	1160-1 528 (600-1)		1160-1 $\frac{1}{2}$ 528 (600-1 $\frac{1}{2}$)		
CIRCLING	1280-1 648 (700-1)		1300-1 $\frac{3}{4}$ 668 (700-1 $\frac{3}{4}$)		1760-3 1128 (1200-3)

MIRL Rwy 12-30
REIL Rws 12 and 30

EC-2, 07 AUG 2025 to 04 SEP 2025

EC-2, 07 AUG 2025 to 04 SEP 2025