




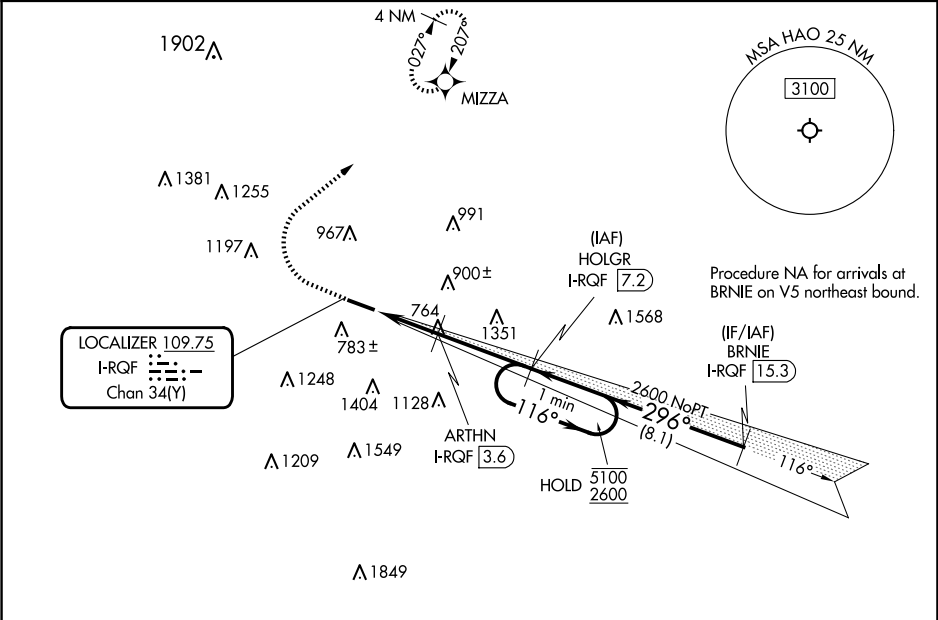
LOC/DME I-RQF	APP CRS	Rwy Idg	5500
109.75	296°	TDZE	619
Chan 34 (Y)		Apt Elev	632

ILS or LOC RWY 30

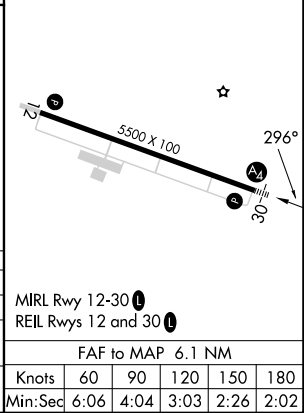
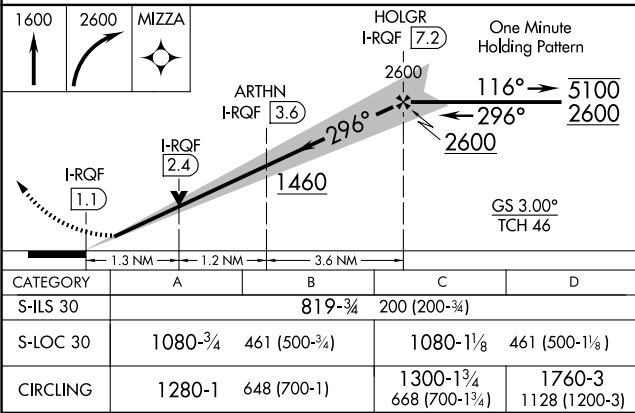
BUTLER COUNTY RGNL/HOGAN FLD (HAO)

RNP APCH - GPS		MALS		MISSED APPROACH: Climb to 1600 then climbing right turn to 2600 direct MIZZA and hold.
DME required.				
 	Inop table does not apply to S-ILS 30.			

ASOS 121.425	CINCINNATI APP CON 121.0 254.25	CLNC DEL 126.25	UNICOM 123.05 (CTAF) 0
-----------------	------------------------------------	--------------------	---------------------------



ELEV 632	TDZE 619
----------	----------



EC-2, 07 AUG 2025 to 04 SEP 2025

EC-2, 07 AUG 2025 to 04 SEP 2025