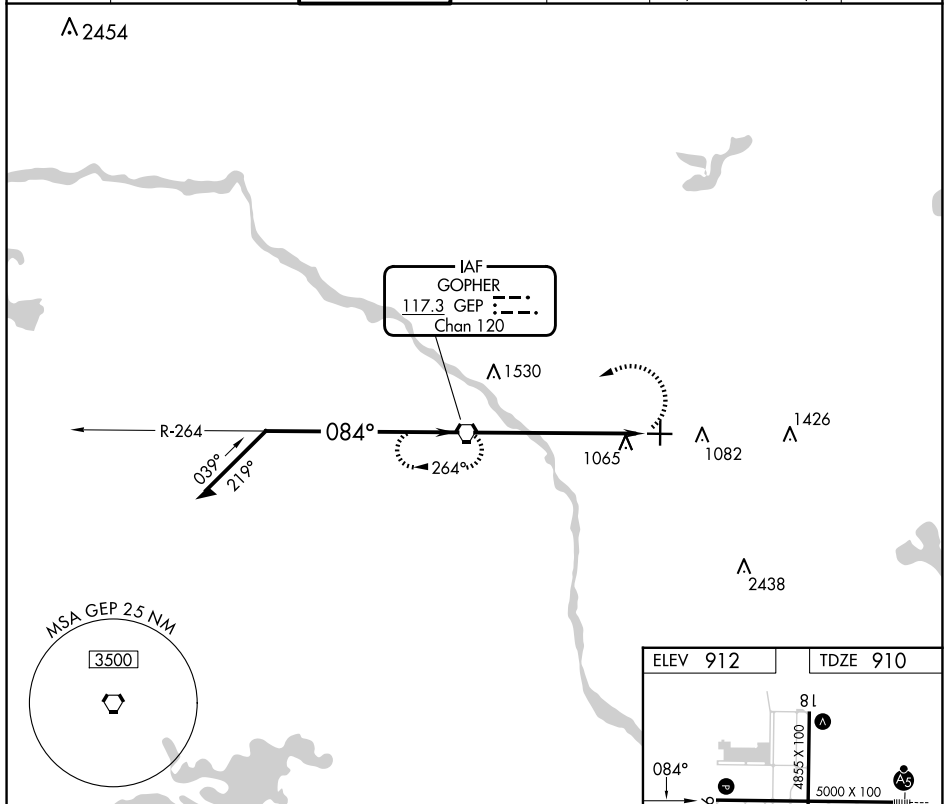


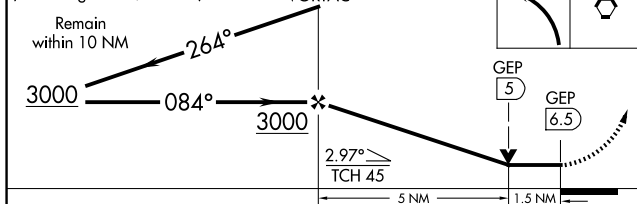
VOR RWY 9  
ANOKA COUNTY/BLAINE (JANES FLD) (ANE)




**T** When local altimeter setting not received, use Crystal altimeter setting: increase all MDA 40 feet and increase S-9 visibility Cat C/D  $\frac{1}{2}$  SM and Circling Cat D  $\frac{1}{4}$  SM. VDP NA when using Crystal altimeter setting.

ATIS <b>120.625</b>	MINNEAPOLIS APP CON <b>126.5 335.65</b>	ANOKA TOWER* <b>132.4</b> (CTAF) <b>0</b>	GND CON <b>121.85</b>	CLNC DEL <b>121.3</b>	CLNC DEL <b>121.85</b> (When twr closed)	UNICOM <b>122.95</b>
------------------------	--	--	--------------------------	--------------------------	--	-------------------------



VGSI and descent angles not coincident GEP  
(VGSI Angle 3.00/TCH 25). VORTAC



CATEGORY	A	B	C	D	MIRL Rwy 18-36 					
S-9	1400-1	490 (500-1)	1400-1 $\frac{3}{8}$	490 (500-1 $\frac{3}{8}$ )	REIL Rwy 9, 18 and 36 					
					FAF to MAP 6.5 NM					
 CIRCLING	1400-1	488 (500-1)	1460-1 $\frac{1}{2}$ 548 (600-1 $\frac{1}{2}$ )	1580-2 668 (700-2)	Knots	60	90	120	150	180
					Min:Sec	6:30	4:20	3:15	2:36	2:10

