

WAAS CH 82312 W09A	APP CRS 089°	Rwy Idg 5000 TDZE 910 Apt Elev 912
--	------------------------	---

RNAV (GPS) RWY 9

ANOKA COUNTY/BLAINE (JANES FLD) (ANE)

RNP APCH - GPS.

T When local altimeter setting not received, use Crystal altimeter setting: increase LPV DA to 1246 feet and all visibilities $\frac{1}{8}$ SM; increase LNAV/VNAV DA to 1373 feet; increase all MDA 40 feet and LNAV Cat C/D visibility $\frac{1}{8}$ SM and Circling Cat D visibility $\frac{1}{4}$ SM. Baro-VNAV and VDP NA when using Crystal altimeter setting. For uncompensated Baro-VNAV systems, LNAV/VNAV NA below -16°C or above 54°C.

MISSED APPROACH: Climb to 3100 direct JUDAL and hold.

ATIS 120.625	MINNEAPOLIS APP CON 126.5 335.65	ANOKA TOWER★ 132.4 (CTAF) 0	GND CON 121.85	CLNC DEL 121.3	CLNC DEL 121.85 (When twr closed)	UNICOM 122.95
------------------------	--	--	--------------------------	--------------------------	--	-------------------------

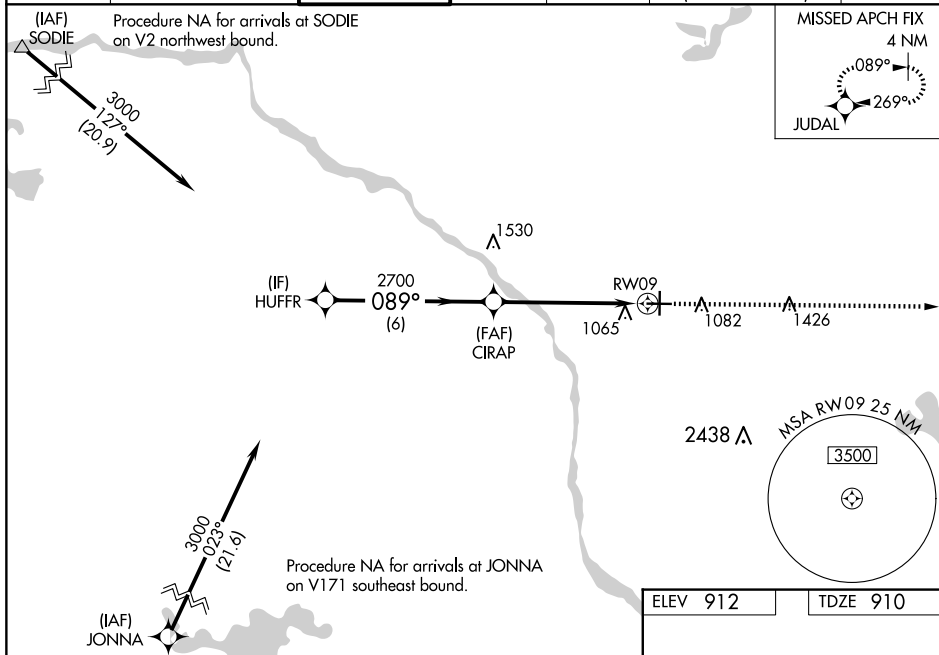


Diagram illustrating the VOR/DME station (HUFFR) and the VOR/DME station (JUDAL) with a glidepath (GP 3.00° TCH 40). The diagram shows the station locations, the glidepath, and the associated altitudes and distances.

CATEGORY	A	B	C	D
LPV DA	1225-7/8	315 (400-7/8)		
RNAV/VNAV DA	1352-1 3/8	442 (500-1 3/8)		
RNAV MDA	1340-1	430 (500-1)	1340-1 1/4	430 (500-1 1/4)
C CIRCLING	1400-1	488 (500-1)	1460-1 1/2 548 (600-1 1/2)	1580-2 668 (700-2)

