

VOR/DME TVF  
**114.45**  
Chan **91(Y)**

APP CRS  
**117°**

Rwy Idg  
TDZE **1115**  
Apt Elev **1119**

VOR Y RWY 13

THIEF RIVER FALLS RGNL(TVF)

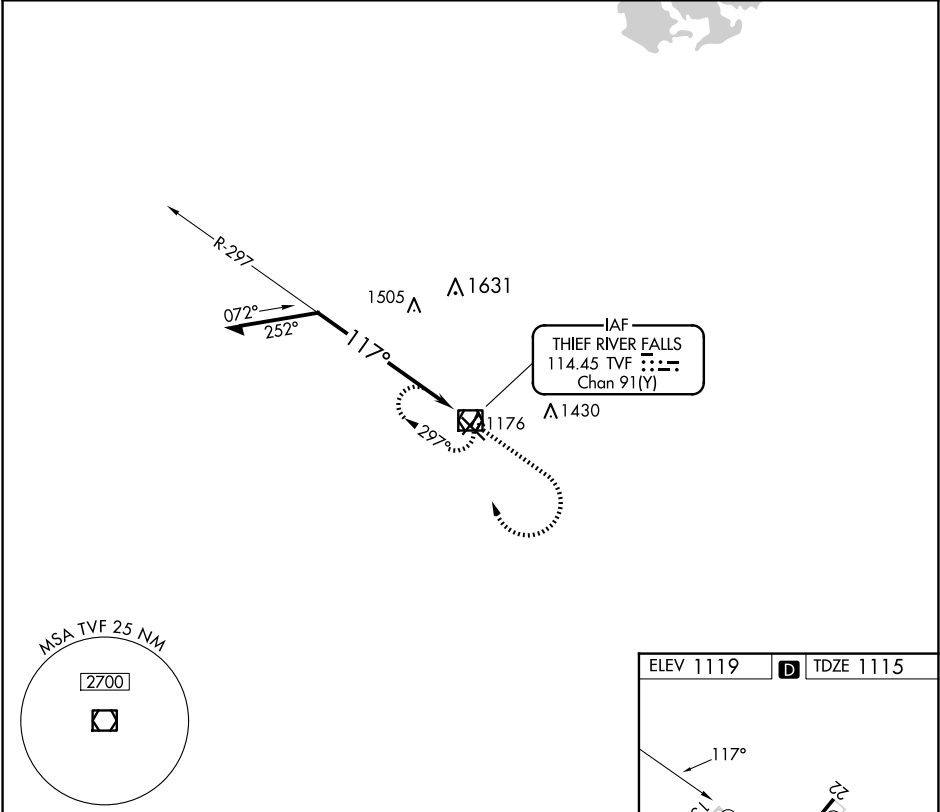
Cirdling to Rwy 4/22 NA at night.

MISSED APPROACH: Climb to 2700 then right turn direct TVF VOR/DME and hold.

AWOS-3PT  
**119.025**

MINNEAPOLIS CENTER  
**132.15 269.6**

UNICOM  
**122.8 (CTAF)**



MSA TVF 25 NM

2700

Remain within 10 NM

TVF VOR/DME

2700

TVF 2.1

117°

297°

1.8 NM

ELEV 1119

TDZE 1115

117°

22

4

5

6

7

8

9

10

11

12

13

14

15

16

17

18

19

20

21

22

1168 ±

4997 X 15

6504 X 150

CATEGORY	A	B	C	D
S-13	1740-1 625 (700-1)		1740-1¾ 625 (700-1¾)	1740-2 625 (700-2)
CIRCLING	1740-1 621 (700-1)		1820-2 701 (800-2)	1980-2¾ 861 (900-2¾)

HIRL Rwy 13-31

MIRL Rwy 4-22

REIL Rwy 4, 13, and 22