

WAAS CH 69311 W31A	APP CRS 313°	Rwy Idg TDZE 1114 Apt Elev 1119	6304 1114 1119
--	------------------------	---	---

RNAV (GPS) RWY 31

THIEF RIVER FALLS RGNL (TVF)

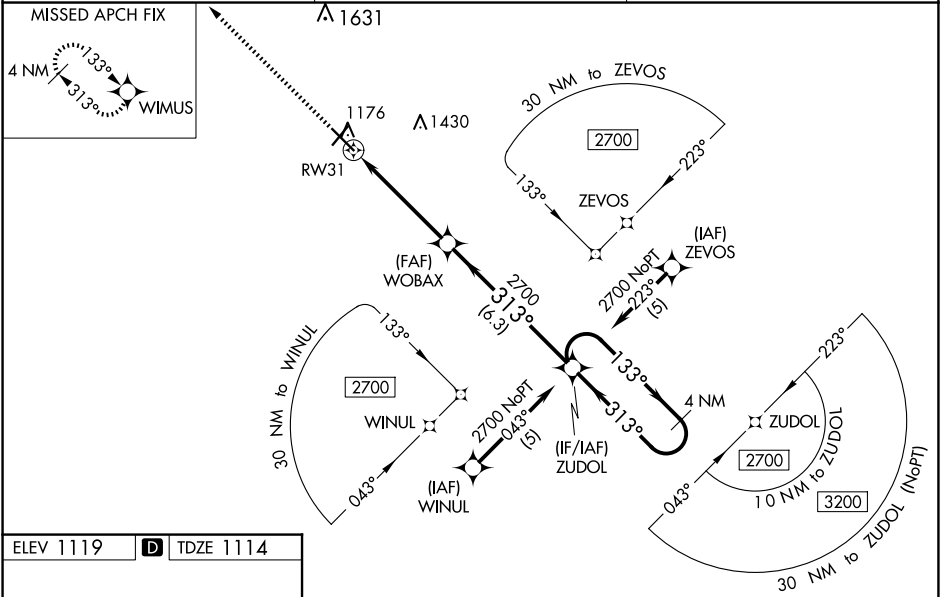
Baro-VNAV and VDP NA when using Crockston altimeter setting. For uncompensated Baro-VNAV systems, LNAV/VNAV NA below -17°C (2°F) or above 54°C (130°F). DME/DME RNP-0.3 NA. When local altimeter setting not received, use Crockston altimeter setting: increase LPV DA to 1446 feet and all visibilities ½ SM; increase LNAV/VNAV DA to 1510 feet and all visibilities ¾ SM; increase all MDAs 100 feet and visibility Cats C and D ¼ SM. For inoperative MALSR, increase LNAV Cats C/D visibility to 1¾ mile. For inoperative MALSR, when using Crockston altimeter setting, increase LPV all Cats visibility to 1½ mile, LNAV/VNAV all Cats visibility to 1¼ mile, LNAV Cats C/D visibility to 1¾ mile.

MALSR

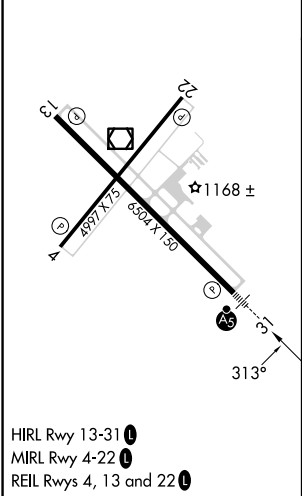
MISSED APPROACH:

Climb to 2700 direct WIMUS and hold.

AWOS-3PT 119.025	MINNEAPOLIS CENTER 132.15 269.6	UNICOM 122.8 (CTAF)
----------------------------	---	-------------------------------



ELEV 1119	D	TDZE 1114
-----------	----------	-----------



2700	WIMUS	WOBAX	ZUDOL	4 NM Holding Pattern
* LNAV only	* 1.3 NM to RW31	2700	313°	133°
1.3 NM	3.5 NM	6.3 NM	GP 3.00°	TCH 55
CATEGORY	A	B	C	D
LPV DA	1364-½		250 (300-½)	
LNAV/VNAV DA	1428-½		314 (400-½)	
LNAV MDA	1580-½	466 (500-½)	1580-1	466 (500-1)
CIRCLING	1580-1	461 (500-1)	1820-2 701 (800-2)	1980-2¾ 861 (900-2¾)