

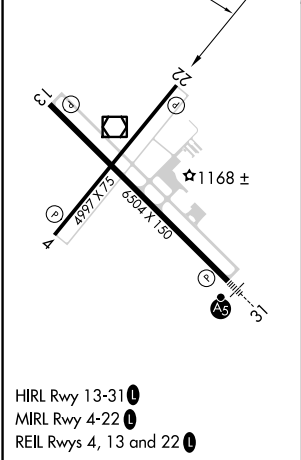
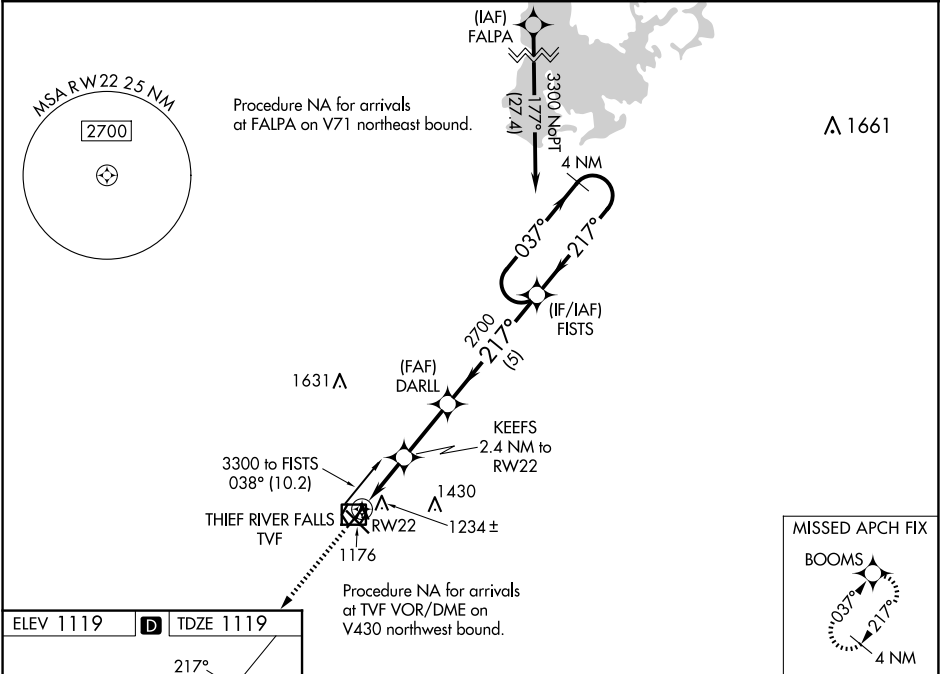
WAAS CH 77836 W22A	APP CRS 217°	Rwy Idg TDZE Apt Elev	4997 1119 1119
--	------------------------	-----------------------------	---

RNAV (GPS) RWY 22
THIEF RIVER FALLS RGNL (TVF)

⚠ Baro-VNAV and VDP NA when using Crookston altimeter setting. For uncompensated Baro-VNAV systems, LNAV/VNAV NA below -17°C (2°F) or above 54°C (130°F). DME/DME RNP-0.3 NA. When local altimeter setting not received, use Crookston altimeter setting and increase all DA 82 feet and all MDA 100 feet. Increase LPV all Cats visibility to 1½ mile and LNAV/VNAV all Cats visibility to 1½ mile.

MISSED APPROACH:
Climb 3300 direct
BOOMS and hold.

AWOS-3PT 119.025	MINNEAPOLIS CENTER 132.15 269.6	UNICOM 122.8 (CTAF) 1
----------------------------	---	--



3300 ↑ BOOMS		VGSI and RNAV glidepath not coincident (VGSI Angle 3.00/TCH 34).		FISTS		4 NM Holding Pattern	
* LNAV only		KEEFS 2.4 NM to RW22		DARLL 2700		037° → 3300 ← 217°	
RW22		* 1.1 NM to RW22		217° 2700		GP 3.00° TCH 40	
1.1 NM		1.3 NM		2.4 NM		5 NM	
CATEGORY	A	B	C	D			
LPV DA	1369-1	250 (300-1)			NA		
LNAV/VNAV DA	1396-1	277 (300-1)			NA		
LNAV MDA	1500-1	381 (400-1)			NA		
CIRCLING	1540-1 421 (500-1)	1580-1 461 (500-1)			NA		