

WAAS CH <b>72711</b> <b>W13A</b>	APP CRS <b>133°</b>	Rwy Idg TDZE Apt Elev	<b>6504</b> <b>1115</b> <b>1119</b>
--	------------------------	-----------------------------	---

RNAV (GPS) RWY 13

THIEF RIVER FALLS RGNL (TVF)

▼

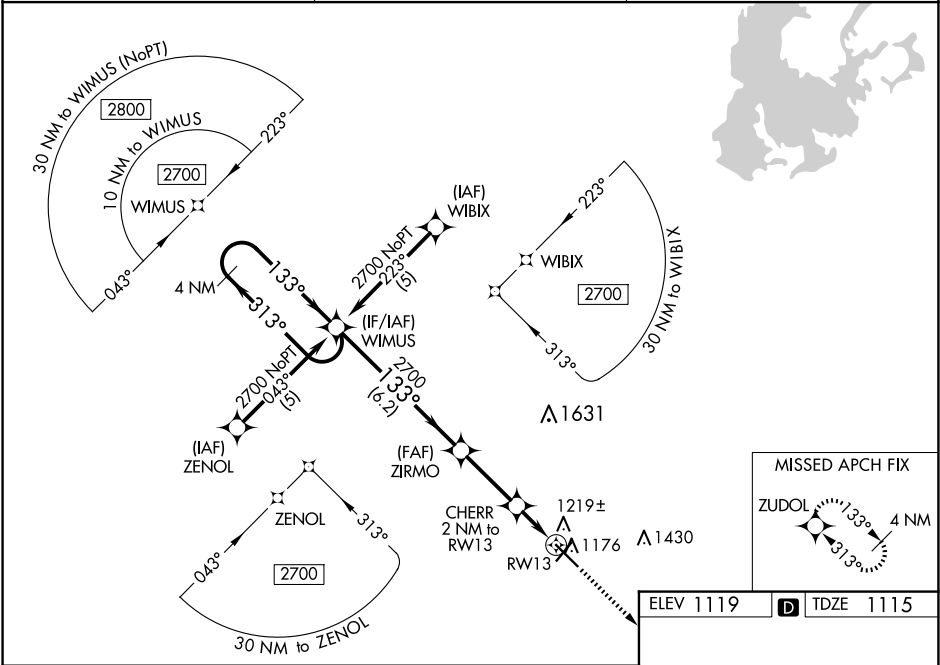
Baro-VNAV and VDP NA when using Crookston altimeter setting. For uncompensated Baro-VNAV systems, LNAV/VNAV NA below -17°C (2°F) or above 54°C (130°F). DME/DME RNP-0.3 NA.

⚠

When local altimeter setting not received, use Crookston altimeter setting: increase LPV DA to 1447 feet and all visibilities ½ SM; increase LNAV/VNAV DA to 1518 feet and all visibilities ¼ SM; increase all MDAs 100 feet and visibility Cats C and D ¾ SM.

MISSED APPROACH:  
Climb to 2700 direct  
ZUDOL and hold.

AWOS-3PT <b>119.025</b>	MINNEAPOLIS CENTER <b>132.15 269.6</b>	UNICOM <b>122.8 (CTAF) 1</b>
----------------------------	---	---------------------------------



<div>4 NM Holding Pattern</div> <div>WIMUS</div> <div>ZIRMO</div> <div>CHERR 2 NM to RW13</div> <div>2700</div> <div>ZUDOL</div> <div>2700</div> <div>GP 3.00° TCH 40°</div> <div>2700</div> <div>133°</div> <div>313°</div> <div>133°</div> <div>2700</div> <div>*1780</div> <div>*1 NM to RW13</div> <div>RW13</div> <div>*LNAV only</div> <div>2700</div> <div>133°</div> <div>6.2 NM</div> <div>2.8 NM</div> <div>1 NM</div> <div>1 NM</div>					<div>133°</div> <div>13</div> <div>32</div> <div>1168 ±</div> <div>491 X 15</div> <div>650 X 150</div> <div>AS</div> <div>5</div>									
CATEGORY		A	B	C	D									
LPV DA		1365-1 250 (300-1)												
LNAV/VNAV DA		1436-1¼ 321 (400-1¼)												
LNAV MDA		1480-1 365 (400-1)				1480-1¼ 365 (400-1¼)								
CIRCLING		1540-1 421 (500-1)	1580-1 461 (500-1)	1820-2 701 (800-2)	1980-2¾ 861 (900-2¾)									
THIEF RIVER FALLS, MINNESOTA Orig-B 23APR20										HIRL Rwy 13-31 ①				
THIEF RIVER FALLS RGNL (TVF) RNAV (GPS) RWY 13										MIRL Rwy 4-22 ①				
										REIL Rws 4, 13 and 22 ①				