

LOC I-HYZ <u>110.5</u>	APP CRS 313°	Rwy Idg TDZE Apt Elev	6304 1114 1119
----------------------------------	------------------------	-----------------------------	---

ILS or LOC RWY 31
THIEF RIVER FALLS RGNL(TVF)

DME required for procedure entry. DME required.

MALSR

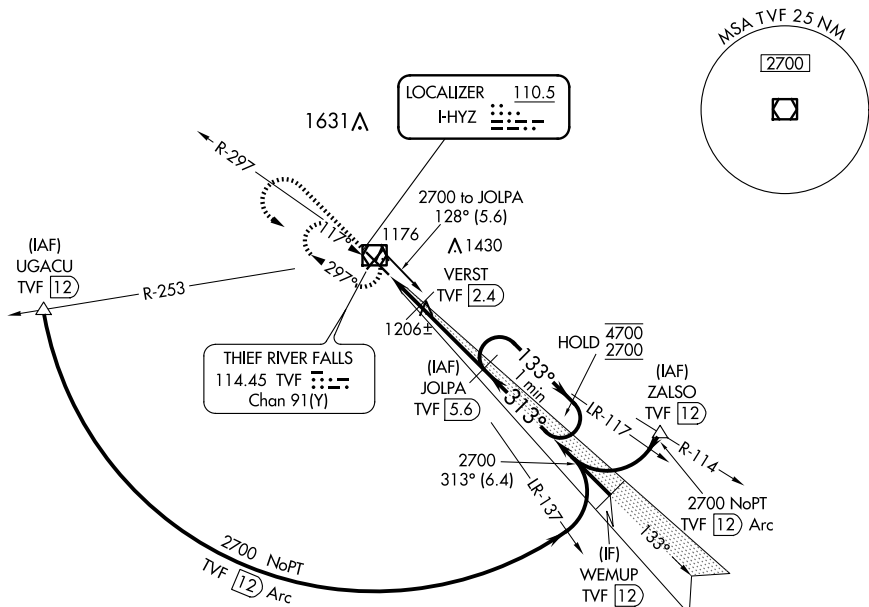
MISSED APPROACH: Climb to 2700 then left turn direct TVF VOR/DME and hold.

T For inop ALS, increase S-LOC 31 Cat C/D visibility to 1 SM.

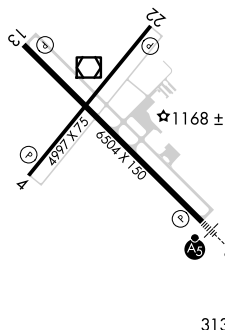
A DME from TVF VOR/DME. Simultaneous reception of I-HYZ and TVF DME required.

AWOS-3PT
119.025

MINNEAPOLIS CENTER
132.15 269.6

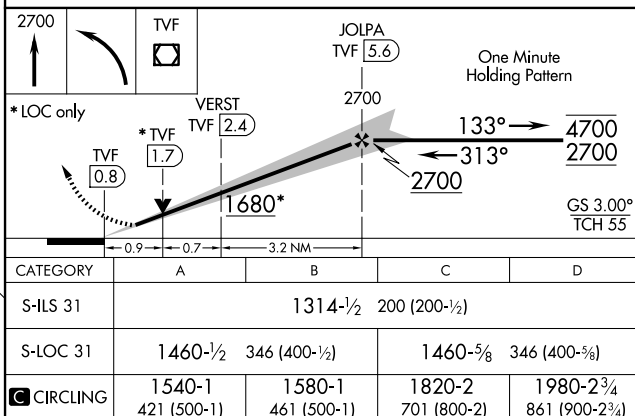
UNICOM
122.8 (CTAF) **L**

ELEV 1119		TDZE 1114
-----------	---	-----------

HIRL Rwy 13-31 **L**

MIRL Rwy 4-22 (L)

RFIL Rwy 4, 13 and 22 (L)



THIEF RIVER FALLS, MINNESOTA

Amdt 5A 25APR19

48°04'N-96°11'W

THIEF RIVER FALLS RGNL (TVF)
ILS or LOC RWY 31

NC-1, 07 AUG 2025 to 04 SEP 2025