

REDWOOD FALLS, MINNESOTA

AL-5200 (FAA)

23334

WAAS CH 86610 W30A	APP CRS 304°	Rwy Idg TDZE Apt Elev	4001 1024 1024
--	------------------------	-----------------------------	---

RNAV (GPS) RWY 30

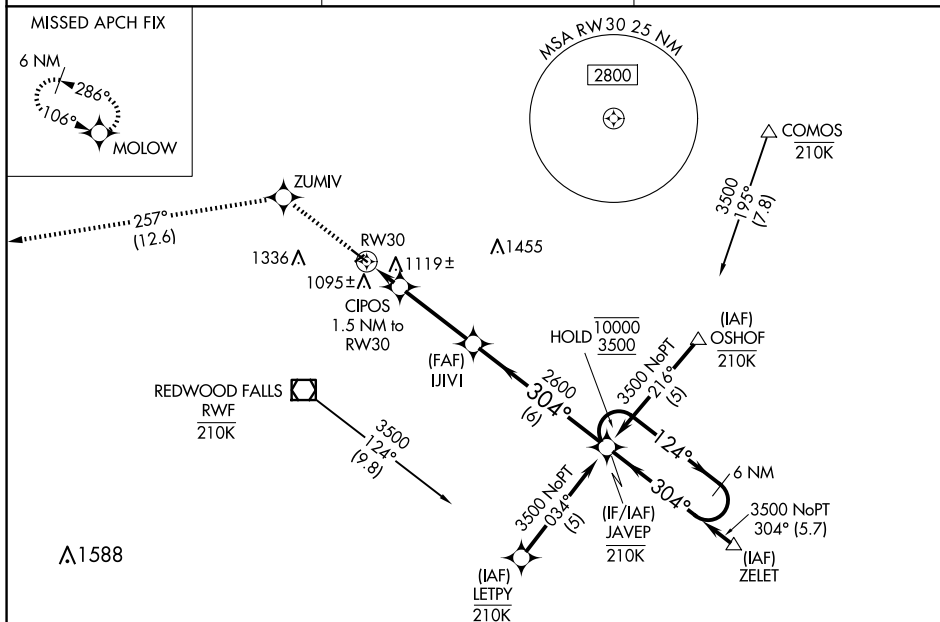
REDWOOD FALLS MUNI (RWF)

RNP APCH - GPS.

- T** Circling Rwy 5, 12 and 23 NA at night. For uncompensated
A Baro-VNAV systems, LNAV/VNAV NA below -21°C or
above 54°C.

MISSED APPROACH: Climb to 3800 direct ZUMIV and on track 257° to MOLOW and hold.

ASOS 126.575	MINNEAPOLIS CENTER 127.1 290.2	UNICOM 123.0 (CTAF) 0
------------------------	--	--



ELEV 1024 TDZE 1024

3800 ZUMIV tr 257° MOLOW

VGSI and RNAV glidepath not coincident (VGSI Angle 3.00/TCH 37)

6 NM Holding Pattern

124° 10000 3500

304° 2600 2600

CIPOS 1.5 NM to RW30

RW30

1.5 NM 3.3 NM 6 NM

GP 3.00° TCH 45

CATEGORY	A	B	C	D
LPV DA	1274-3/4	250 (300-3/4)		
LNAV/VNAV DA	1420-1 1/8	396 (400-1 1/8)		
LNAV MDA	1380-1	356 (400-1)		
CIRCLING	1480-1 456 (500-1)	1660-1 636 (700-1)	1700-2 676 (700-2)	1700-2 1/4 676 (700-2 1/4)

REIL Rwy 12 and 30
MIRL Rwy 12-30

REDWOOD FALLS, MINNESOTA
Amdt 1 30NOV23

44°33'N-95°05'W

REDWOOD FALLS MUNI (RWF)
RNAV (GPS) RWY 30

NC-1, 07 AUG 2025 to 04 SEP 2025