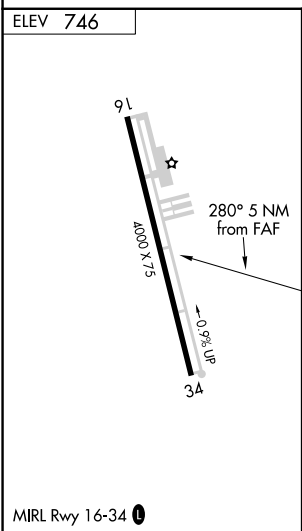
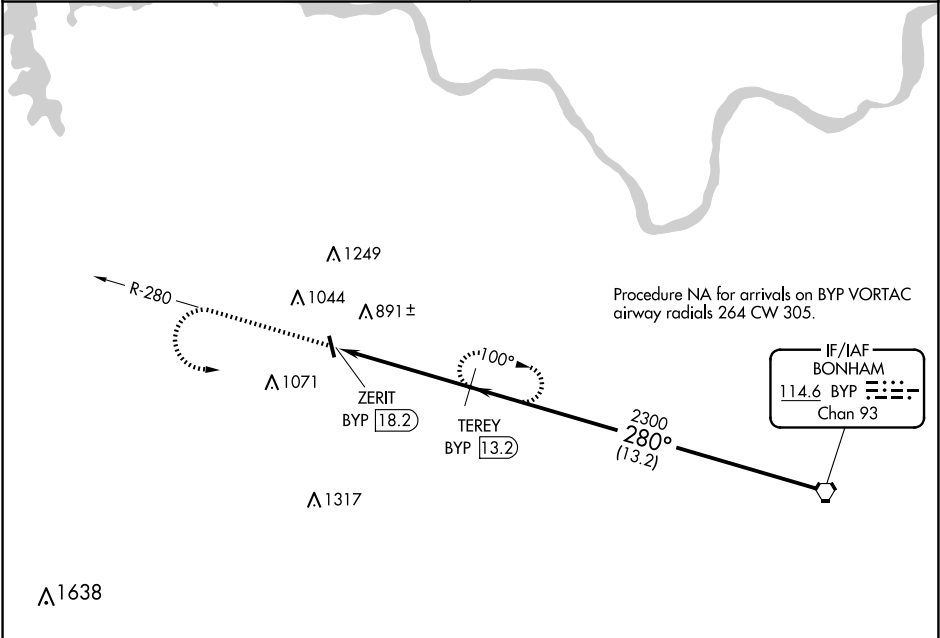


VORTAC BYP	APP CRS	Rwy Idg	N/A
114.6	280°	TDZE	N/A
Chan 93		Apt Elev	746

VOR/DME-A
SHERMAN MUNI (SWI)

<p>⚠ NA</p> <p>Use Sherman/Denison altimeter setting, when not received, use Dallas Love Fld altimeter setting and increase all MDA 140 feet, increase visibility Cat B ¼ mile, Cat C ½ mile, and Cat D ¾ mile. Procedure NA at night. Helicopter visibility reduction below 1 SM NA.</p>	<p>MISSED APPROACH: Climb to 2300, then climbing left turn to 2400 on BYP R-280 to TEREY/13.2 DME and hold.</p>
--	--

<p>FORT WORTH CENTER 124.75 323.0</p>	<p>UNICOM 122.8 (CTAF) 0</p>
--	---



	<p>2300</p> <p>2400</p> <p>BYP R-280</p>	<p>TEREY BYP 13.2</p>	<p>TEREY BYP 13.2</p>	<p>BYP VORTAC</p>
	<p>ZERIT BYP 18.2</p>	<p>2300</p>	<p>280°</p>	<p>2300</p>
	<p>5 NM</p>	<p>13.2 NM</p>		
CATEGORY	A	B	C	D
CIRCLING	1300-1 554 (600-1)	1420-1 674 (700-1)	1620-2½ 874 (900-2½)	1620-2¾ 874 (900-2¾)