

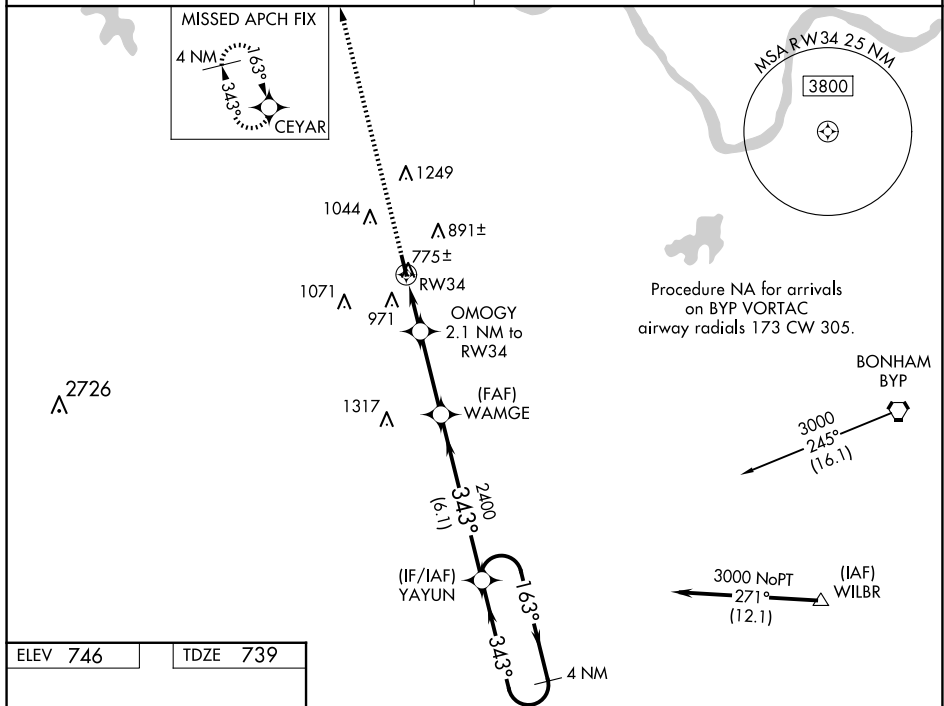
| | | |
|--|------------------------|---|
| WAAS CH 86534 W34A | APP CRS 343° | Rwy Idg 4000 TDZE 739 Apt Elev 746 |
|--|------------------------|---|

RNAV (GPS) RWY 34
SHERMAN MUNI (SWI)

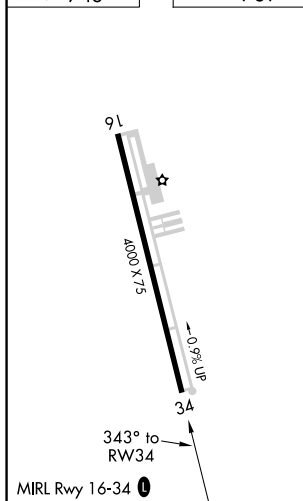
T DME/DME RNP-0.3 NA. Use Sherman/Denison altimeter setting, if not received, use
A NA Dallas Love Fld altimeter setting and increase all MDA 140 feet; increase LP and LNAV
 Cat C visibility $\frac{3}{8}$ mile, Circling Cat B visibility $\frac{1}{2}$ mile and Cat C visibility $\frac{1}{2}$ mile.
 Procedure NA at night. Helicopter visibility reduction below 1 SM NA.

MISSED APPROACH:
Climb to 3000 direct
CEYAR and hold.

| | |
|---|--|
| <p>FORT WORTH CENTER</p> <p>124.75 323.0</p> | <p>UNICOM</p> <p>122.8 (CTAF) 0</p> |
|---|--|



| | | |
|----------|--|----------|
| ELEV 746 | | TDZE 739 |
|----------|--|----------|



| | | | | | | |
|-----------|--------------------|--|--|---|---|----|
| 3000 | CEYAR | <p>*LNAV only.</p> <p>OMGOY 2.1 NM to RW34 ≤ 3.00° TCH 45°</p> <p>WAMGE</p> <p>YAYUN</p> <p>4 NM Holding Pattern</p> <p>163° → ← 343°</p> <p>3000</p> <p>RW34</p> <p>2.1 NM</p> <p>3.1 NM</p> <p>6.1 NM</p> <p>*1420</p> <p>2400</p> | | | | |
| CATEGORY | A | B | | | C | D |
| LP MDA | 1060-1 321 (400-1) | | | | | NA |
| LNNAV MDA | 1100-1 361 (400-1) | | | 1100-1 $\frac{1}{8}$ 361 (400-1 $\frac{1}{8}$) | | NA |
| CIRCLING | 1300-1 554 (600-1) | 1420-1 674 (700-1) | | 1620-2 $\frac{1}{2}$ 874 (900-2 $\frac{1}{2}$) | | NA |