

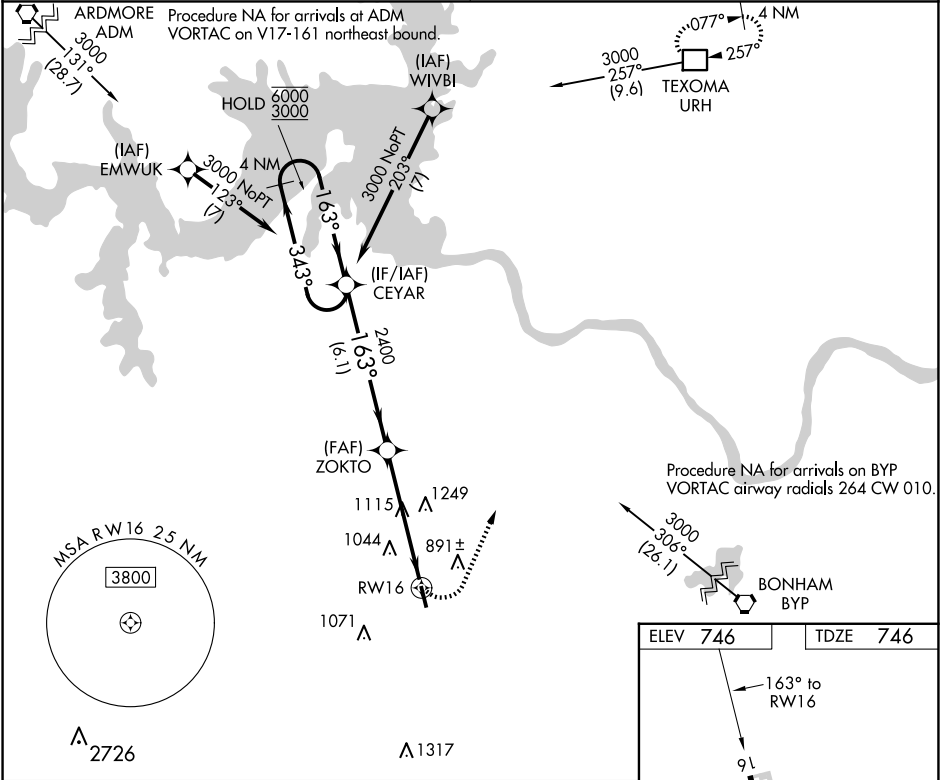
APP CRS	Rwy Idg	4000
163°	TDZE	746
	Apt Elev	746

RNAV (GPS) RWY 16

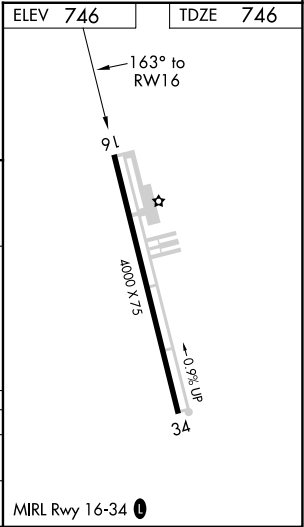
SHERMAN MUNI (SWI)

RNP APCH	Use Sherman/Denison altimeter setting, if not received use Dallas Love Fld altimeter setting and increase all MDA 140 feet and increase LNAV visibility Cat B ¼ SM, Cat C ½ SM, and increase Circling visibility Cats A/B ¼ SM, Cat C ½ SM. Procedure NA at night. Rwy 16 helicopter visibility reduction below 1 SM NA.	MISSED APPROACH: Climbing left turn to 3000 direct URH DME and hold.
----------	---	---

FORT WORTH CENTER 124.75 323.0	UNICOM 122.8 (CTAF) 0
-----------------------------------	--------------------------



4 NM Holding Pattern		CEYAR		ZOKTO		3000	URH
<div><div>6000</div><div>3000</div></div>		<div>← 343°</div> <div>→ 163°</div>		163°		<div>3.00°</div> <div>TCH 45</div>	
		2400		RW16			
		6.1 NM		5.1 NM			
CATEGORY	A	B	C	D			
LNAV MDA	1440-1	694 (700-1)	1440-2 694 (700-2)	NA			
C CIRCLING	1440-1	694 (700-1)	1620-2½ 874 (900-2½)	NA			



SC-2, 07 AUG 2025 to 04 SEP 2025

SC-2, 07 AUG 2025 to 04 SEP 2025