

WAAS CH 63119 W06A	APP CRS 063°	Rwy Ldg TDZE Apt Elev	5013 394 398
--	------------------------	-----------------------------	---

RNAV (GPS) RWY 6

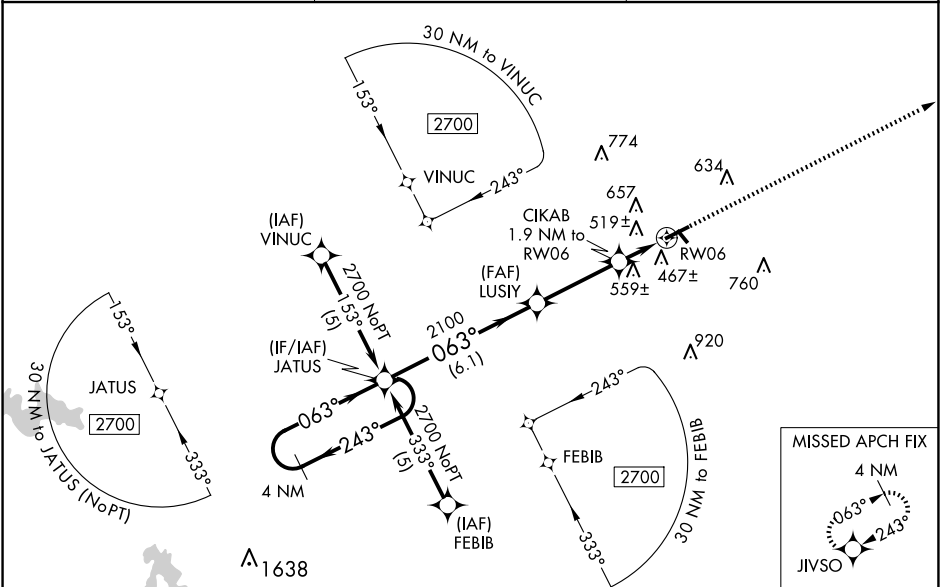
HARRISBURG-RALEIGH (HSB)

⚠

Baro-VNAV NA when using Williamson County Rgnl altimeter setting. For uncompensated Baro-VNAV systems, LNAV/VNAV NA below -15°C (5°F) or above 48°C (118°F). DME/DME RNP-0.3 NA. Visibility reduction by helicopters NA. When local altimeter setting not received, use Marion altimeter setting: increase LPV DA to 744 feet; increase LNAV/VNAV DA to 1020 feet; increase all MDAs 80 feet and LNAV visibility Cat C/D ¼ SM and Circling visibility Cat C/D ¼ SM. VDP NA with Williamson County Rgnl altimeter setting.

MISSED APPROACH:
Climb to 2000 direct JIVSO and hold.

AWOS-3PT 135.925	KANSAS CITY CENTER 127.475 346.275	UNICOM 122.8 (CTAF) 0
----------------------------	--	---------------------------------



4 NM Holding Pattern JATUS		2000 JIVSO	
2700 ← 243° 063° →		*LNAV only	
GP 3.00° TCH 35°		*1.3 NM to RW06	
6.1 NM		0.6 NM	
CATEGORY		ELEV 398 TDZE 394	
LPV DA		A B C D	
LNAV/VNAV DA		682-1 288 (300-1)	
LNAV MDA		958-2 564 (600-2)	
CIRCLING		820-1 426 (500-1) 820-1¼ 426 (500-1¼)	
		900-1 1020-1 1020-1¾ 1080-2¼	
		502 (600-1) 622 (700-1) 622 (700-1¾) 682 (700-2¼)	
		REIL Rwy 6 and 24 0 MRL Rwy 6-24 and 14-32 0	