

NDB AIK

347

APP CRS

225°

Rwy Ldg

5500

TDZE

515

Apt Elev

529

NDB RWY 25

AIKEN RGNL (AIK)

▼

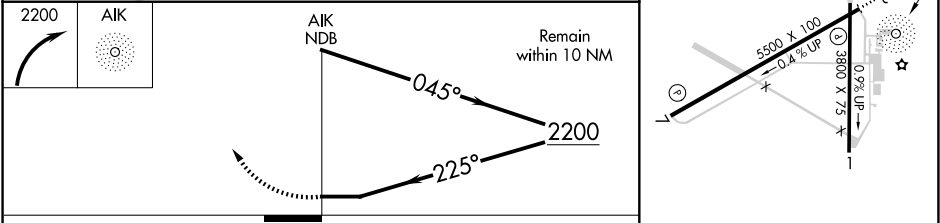
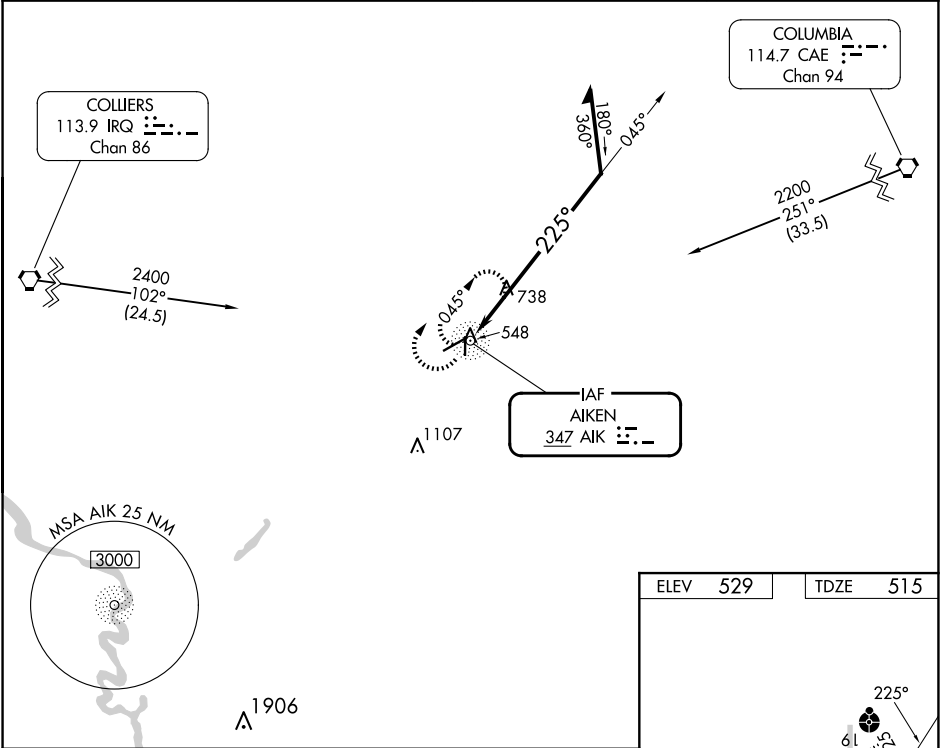
NA

When local altimeter setting not received, use Augusta Rgnl at Bush Fld altimeter setting and increase all MDAs 120 feet; increase S-25 Cats B/C/D and Circling Cat C visibility ¼ SM. For inop ODALS, increase S-25 Cat C/D visibility to 1⅞ mile. For inop ODALS when using Augusta Rgnl at Bush Fld altimeter setting, increase S-25 Cat C/D visibility to 2½ mile. Helicopter visibility reduction below ¾ SM NA.

ODALS

MISSED APPROACH: Climbing right turn to 2200 in AIK NDB holding pattern.

AWOS-3PT 118.025	AUGUSTA APP CON ★ 119.15 284.625	CLNC DEL 126.075	UNICOM 122.8 (CTAF) 0
---------------------	-------------------------------------	---------------------	--------------------------



CATEGORY	A	B	C	D
S-25	1180-¾ 665 (700-¾)	1180-1¾ 665 (700-1¾)	1180-1¾ 651 (700-1¾)	1420-3 891 (900-3)
CIRCLING	1180-1 651 (700-1)	1180-1¾ 651 (700-1¾)	1420-3 891 (900-3)	

ELEV 529

TDZE 515

REIL Rwy 25

MIRL Rwy 7-25 0