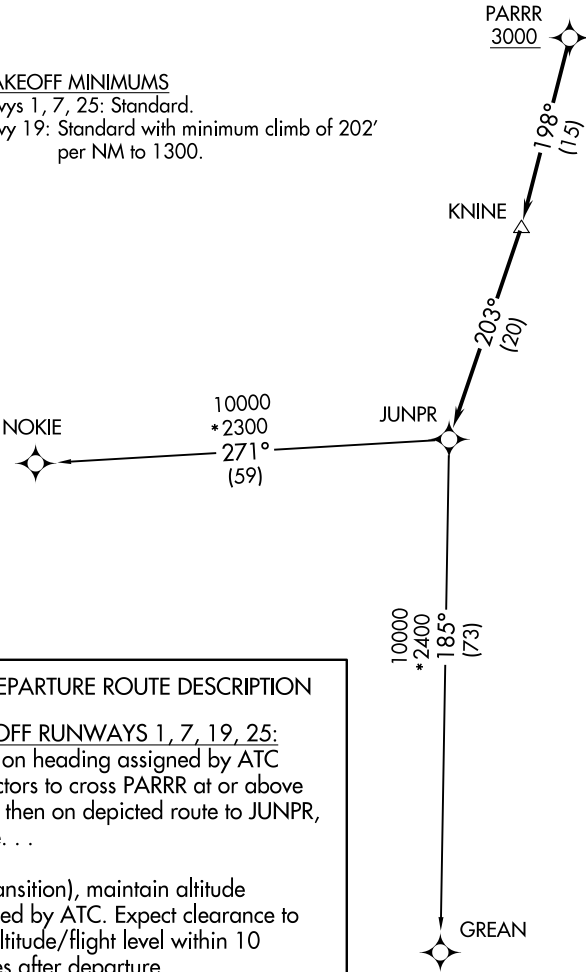


AUGUSTA DEP CON ★ 119.15 284.625 CLNC DEL 126.075 CTAF 122.8	TOP ALTITUDE: ASSIGNED BY ATC	RNAV 1 - DME/DME/IRU or GPS required. RADAR required.
---	----------------------------------	--



NOTE: Do not exceed 250K until advised by ATC.

TAKEOFF MINIMUMS
Rwys 1, 7, 25: Standard.
Rwy 19: Standard with minimum climb of 202'
per NM to 1300.

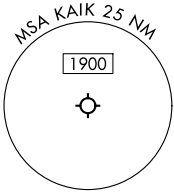


DEPARTURE ROUTE DESCRIPTION

TAKEOFF RUNWAYS 1, 7, 19, 25:
Climb on heading assigned by ATC
for vectors to cross PARRR at or above
3000, then on depicted route to JUNPR,
thence. . .

. . . (transition), maintain altitude
assigned by ATC. Expect clearance to
filed altitude/flight level within 10
minutes after departure.

GREAN TRANSITION (JUNPR6.GREAN)
NOKIE TRANSITION (JUNPR6.NOKIE)



NOTE: Chart not to scale.