

WAAS CH 61215 W05A	APP CRS 050°	Rwy Idg TDZE 181 Apt Elev 182
--	------------------------	---

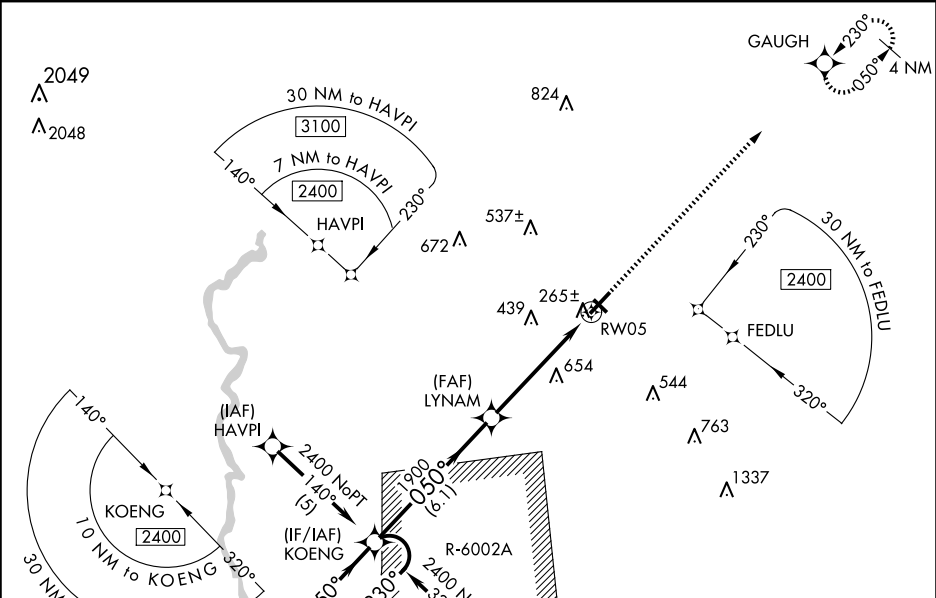
RNAV (GPS) RWY 5

SUMTER (SMS)

⚠ For uncompensated Baro-VNAV systems, LNAV/VNAV NA below -15°C (5°F) or above 48°C (118°F). DME/DME RNP-0.3 NA. Procedure NA when R-6002A is active. Circling NA to Rwy 14-32. When local altimeter setting not received, use Camden altimeter setting and increase all DA 65 feet and all MDA 80 feet and LPV all Cats, LNAV/VNAV all Cats, LNAV Cats C/D, and Circling Cats C/D visibilities ¼ mile. VDP and Baro/VNAV NA when using Camden altimeter setting.

MISSED APPROACH: Climb to 2400 direct GAUGH and hold.

AWOS-3 118.075	SHAW APP CON * 125.4	UNICOM 122.7 (CTAF) 0
--------------------------	--------------------------------	--



4 NM Holding Pattern

VGSI and RNAV glidepath not coincident (VGSI Angle 3.00/TCH 45).

2400

GAUGH

* LNAV only.

GP 3.00° TCH 40

2400 ← 230°

050° →

050°

1900

1900

* 2.3 NM to RW05

RW05

6.1 NM

2.9 NM

2.3 NM

CATEGORY	A	B	C	D
LPV DA	381-¾ 200 (200-¾)			
LNAV/VNAV DA	535-1¼ 354 (400-1¼)			
LNAV MDA	940-1 759 (800-1)	940-1¼ 759 (800-1¼)	940-2¼ 759 (800-2¼)	940-2½ 759 (800-2½)
CIRCLING	940-1 758 (800-1)	940-1¼ 758 (800-1¼)	1000-2½ 818 (900-2½)	1000-2¾ 818 (900-2¾)

ELEV 182

TDZE 181

2400

GAUGH

230°

050°

1900

1900

* 2.3 NM to RW05

RW05

6.1 NM

2.9 NM

2.3 NM

MIRL Rwy 5-23 **0**

REIL Rwy 5 and 23 **0**