

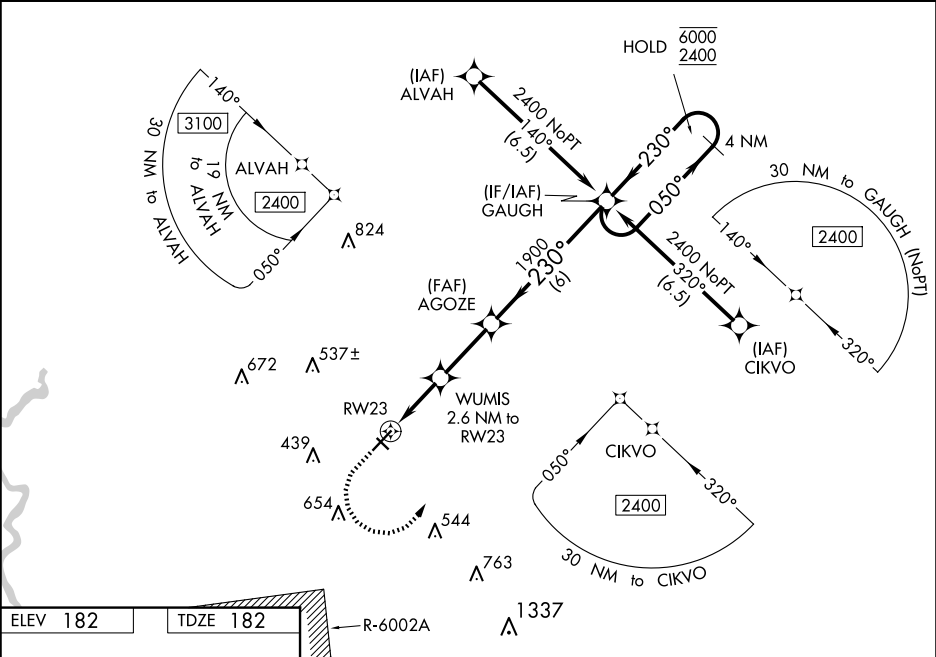
WAAS CH 58141 W23A	APP CRS 230°	Rwy Idg 5501 TDZE 182 Apt Elev 182
--	------------------------	---

RNAV (GPS) RWY 23

SUMTER (SMS)

RNP APCH. <div><div>⚠</div><div>Circling NA to Rwy 14 and 32. For uncompensated Baro-VNAV systems, LNAV/VNAV NA below -1.5°C or above 54°C. Inop table does not apply to LPV all Cats. For inop ALS increase LNAV/VNAV Cat A/B visibility to 7/5 SM.</div></div>		ODALS <div><div>⬆</div><div>⋮</div></div>	MISSED APPROACH: Climb to 600 then climbing left turn to 2400 direct GAUGH and hold.
---	--	--	---

AWOS-3 118.075	SHAW APP CON★ 125.4	UNICOM 122.7 (CTAF) 0
--------------------------	-------------------------------	---------------------------------



ELEV 182 TDZE 182		600 2400 GAUGH		4 NM Holding Pattern	
*LNAV only.		WUMIS 2.6 NM to RW23		AGOZE 1900	
1 NM to RW23		RW23		1040	
1 NM 1.6 NM 2.7 NM 6 NM		230°		050° → 6000 ← 230° 2400	
CATEGORY		A	B	C	D
LPV DA		382-¾		200 (200-¾)	
LNAV/VNAV DA		460-¾		278 (300-¾)	
LNAV MDA		540-¾ 358 (400-¾)		540-7/8 358 (400-7/8)	
CIRCLING		600-1 418 (500-1)	680-1 498 (500-1)	1000-2½ 818 (900-2½)	1000-2¾ 818 (900-2¾)