

LOC/DME I-SGS
108.35
Chan 20 (Y)

APP CRS
342°

Rwy Idg **4002**
TDZE **820**
Apt Elev **821**

LOC RWY 34

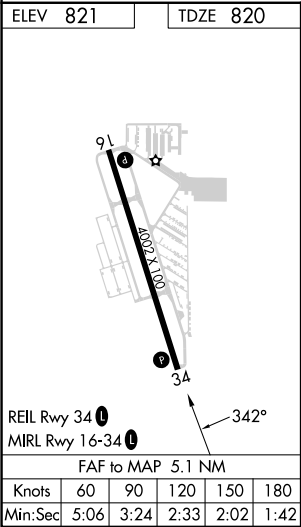
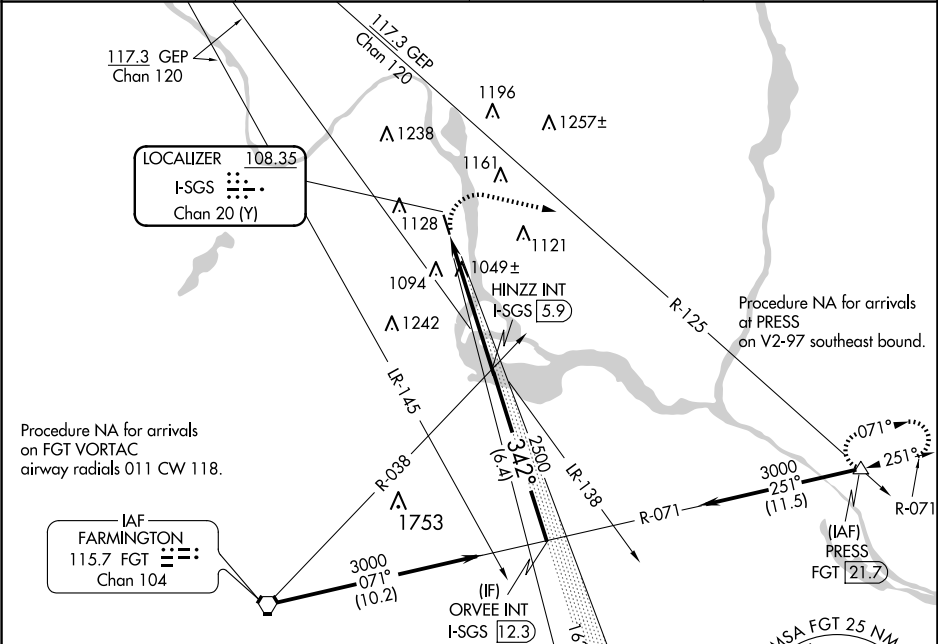
SOUTH ST PAUL MUNI/RICHARD E FLEMING FLD (SGS)




NA

Helicopter visibility reduction below $\frac{3}{4}$ SM NA. When local altimeter setting not received, use Minneapolis-St Paul Intl/ Wold-Chamberlain altimeter setting and increase all MDA 40 feet. Increase Circling Cat C/D visibility $\frac{1}{4}$ mile.

MISSED APPROACH: Climbing right turn to 3000 on heading 100° and on GEP VORTAC R-125 to PRESS INT/21.7 DME and hold.

AWOS-3 119.425	MINNEAPOLIS APP CON 121.2 335,65	CLNC DEL 118.2	UNICOM 122.7 (CTAF)
--------------------------	--	--------------------------	-------------------------------



<div>3000</div> <div></div>	<div>GEP</div> <div>R-125</div>	<div>PRESS</div> <div></div>	<div><div><div>HINZZ INT</div><div>I-SGS</div><div>5.9</div></div></div>				<div><div>ORVEE INT</div><div>I-SGS</div><div>12.3</div></div>
			<div><div><div><div><div><div>3000</div></div></div><div><div><div><div><div><div>342°</div></div></div><div><div><div><div><div><div>2500</div></div></div></div></div><div><div><div><div><div><div>3.04°</div></div></div><div><div><div>TCH 40</div></div></div></div></div><div><div><div>I-SGS</div><div>0.8</div></div></div></div></div><div><div><div>5.1 NM</div></div><div><div>6.4 NM</div></div></div></div></div></div></div></div></div>				
CATEGORY	A		B		C		D
S-34	1300-1 480 (500-1)		1300-1 ³ / ₈ 480 (500-1 ³ / ₈)				
 CIRCLING	1400-1 579 (600-1)		1540-1 719 (800-1)		1540-2 719 (800-2)		1620-2 ¹ / ₂ 799 (800-2 ¹ / ₂)