

KINGDOM FIVE DEPARTURE

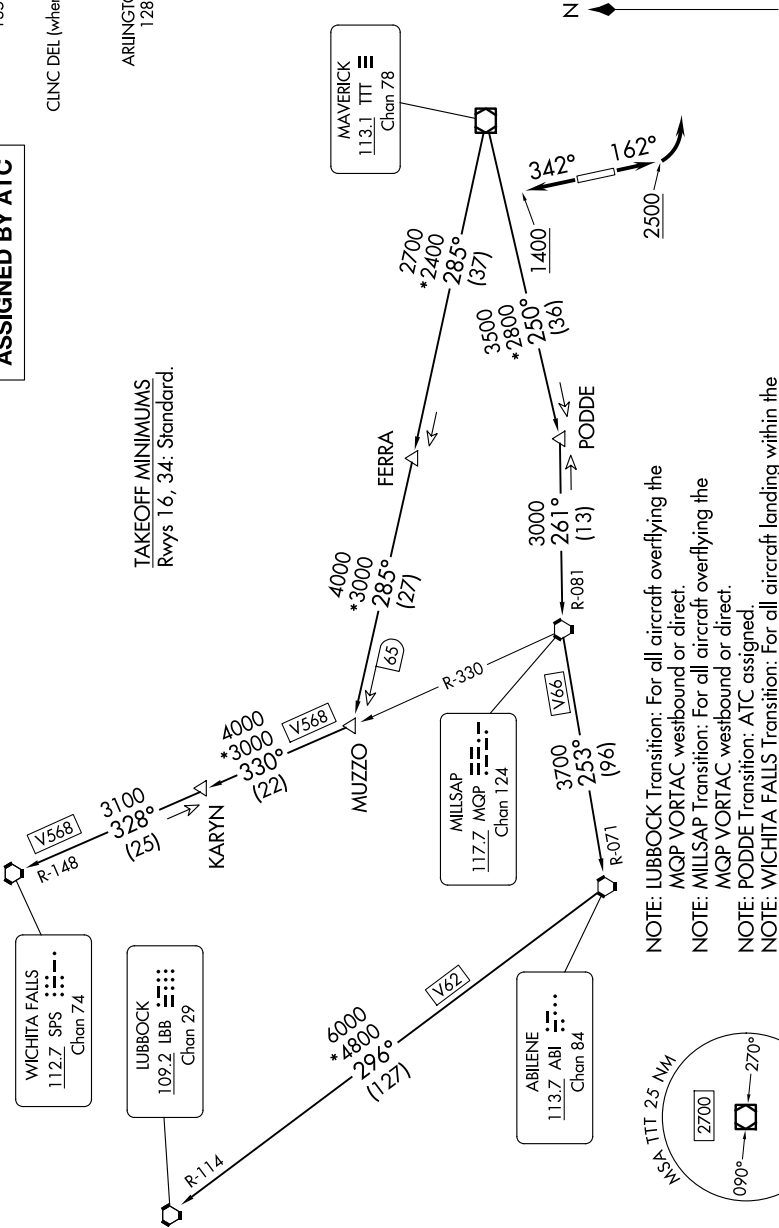
SC-2, 07 AUG 2025 to 04 SEP 2025

TOP ALTITUDE:  
ASSIGNED BY ATC

LONE STAR DEP CON  
135.975 379.9  
CLNC DEL  
121.875  
CLNC DEL (when hwr closed)  
118.85  
GND CON  
121.875  
ARLINGTON TOWER ★  
128.625 (CTAF)

TAKEOFF MINIMUMS  
Rwys 16, 34: Standard.

RADAR and DME required.



NOTE: LUBBOCK Transition: For all aircraft overlying the MQP VORTAC westbound or direct.  
NOTE: MILLSAP Transition: For all aircraft overlying the MQP VORTAC westbound or direct.  
NOTE: PODDE Transition: ATC assigned.  
NOTE: WICHITA FALLS Transition: For all aircraft landing within the Wichita Falls terminal area or overlying the SPS VORTAC.  
NOTE: For all aircraft requesting 17000 and below.

NOTE: Chart not to scale.

(CONTINUED ON FOLLOWING PAGE)

KINGDOM FIVE DEPARTURE