

LOC/DME I-GKY 111.55 Chan 52 (Y)	APP CRS 342°	Rwy Ldg TDZE Apt Elev 6080 620 628
--	------------------------	---

ILS or LOC/DME RWY 34
ARLINGTON MUNI (GKY)

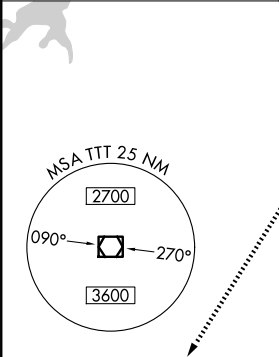
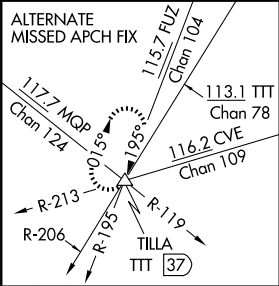
When local altimeter setting not received, use Grand Prairie Muni altimeter setting. Inop table does not apply to S-ILS 34.

For inop MALSR increase S-LOC 34 Cat A, B visibility to 1 mile.

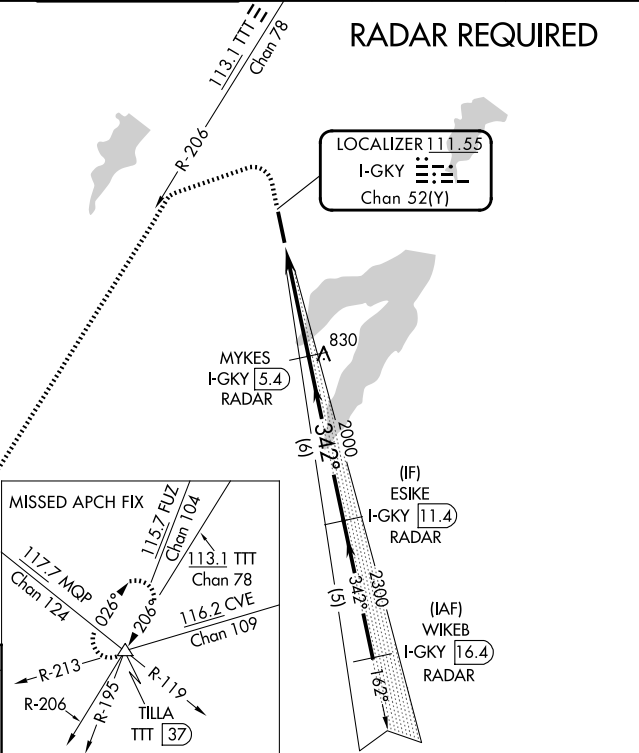
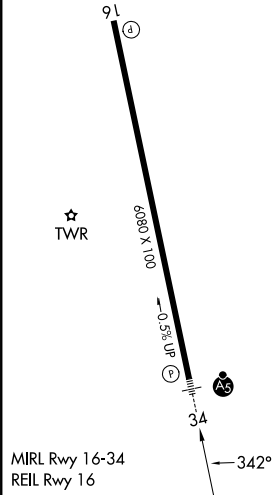
MALSR

MISSED APPROACH: Climb to 1100 then climbing left turn to 3000 via heading 245° and TTT VOR/DME R-206 to TILLA INT/TTT 37 DME and hold.

ASOS 127.375	LONE STAR APP CON 135.975 379.9	ARLINGTON TOWER ★ 128.625 (CTAF)	GND CON 121.875	CLNC DEL 121.875	CLNC DEL 118.85 (When twr closed)
------------------------	---	--	---------------------------	----------------------------	--



ELEV 628	TDZE 620
-----------------	-----------------



1100

3000

TTT R-206

TILLA

VGSI and ILS glidepath not coincident (VGSI Angle 3.00°/TCH 55).

MYKES I-GKY [5.4] RADAR

ESIKE I-GKY [11.4] RADAR

*LOC only.

*I-GKY [2.4]

I-GKY [1.1]

2000

342°

2300

GS 3.00°

TCH 60

CATEGORY	A	B	C	D
S-ILS 34	820-¾	200 (200-¾)		NA
S-LOC 34	1060-¾	440 (500-¾)		NA
CIRCLING	1100-1 472 (500-1)	1140-1 512 (600-1)	1220-1½ 592 (600-1½)	NA

SC-2, 07 AUG 2025 to 04 SEP 2025

SC-2, 07 AUG 2025 to 04 SEP 2025