

WAAS CH <b>82512</b> <b>W05A</b>	APP CRS <b>054°</b>	Rwy Idg TDZE <b>439</b> Apt Elev <b>439</b>	<b>6051</b>
--	------------------------	---	-------------

RNAV (GPS) RWY 5

MADISONVILLE RGNL (2I0)

RNP APCH - GPS.

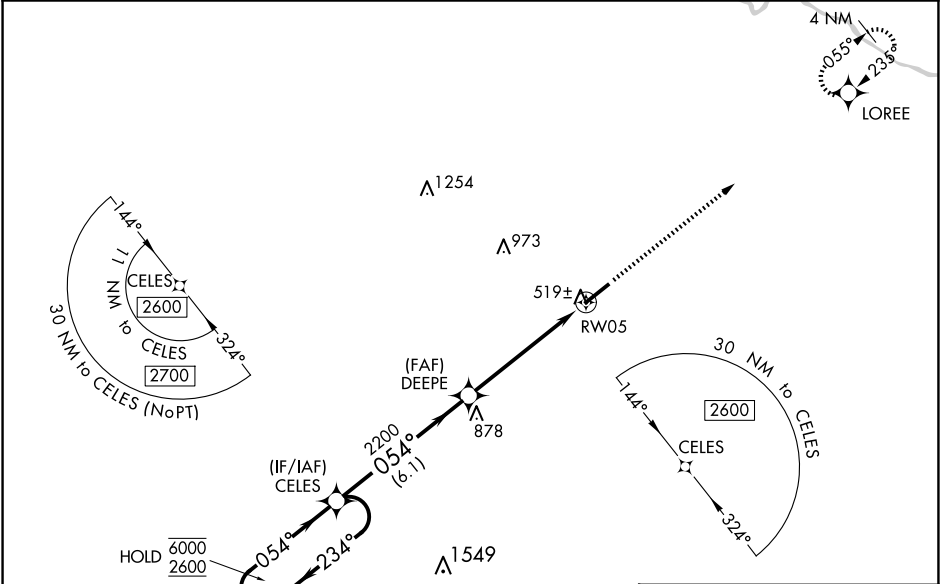
▼

▲

Baro-VNAV and VDP NA when using EVV altimeter setting. Rwy 5 helicopter visibility reduction below ¾ SM NA. For uncompensated Baro-VNAV systems, LNAV/VNAV NA below -15°C or above 54°C. When local altimeter setting not received, use EVV altimeter setting and increase LPV DA to 788 feet and all visibilities ¼ SM; increase LNAV/VNAV DA to 818 feet and all visibilities ⅓ SM; increase all MDAs 100 feet and LNAV visibility Cat C/D ¼ SM, and Circling visibility Cat C ¼ SM.

MISSED APPROACH:  
Climb to 2600 direct LOREE and hold.

AWOS-3 <b>126.475</b>	EVANSVILLE APP CON ★ <b>124.025 290.9</b>	CLNC DEL <b>120.1</b>	UNICOM <b>122.7 (CTAF) 0</b>
--------------------------	--	--------------------------	---------------------------------



4 NM Holding Pattern

CELES

6000 ← 234°

2600 → 054°

GP 3.00°

TCH 53

DEEPE

2200

1.5 NM to RWY05

RWY05

6.1 NM

3.8 NM

1.5 NM

2600

LOREE

CATEGORY	A	B	C	D
LPV DA		689-¾	250 (300-¾)	
LNAV/VNAV DA		719-⅞	280 (300-⅞)	
LNAV MDA	980-1	541 (600-1)	980-1⅝	541 (600-1⅝)
CIRCLING	980-1	541 (600-1)	980-1⅝ 541 (600-1⅝)	1340-3 901 (1000-3)

ELEV 439

TDZE 439

HIRL Rwy 5-23 0

REIL Rwy 5 0