

WAAS CH 77911 W23A	APP CRS 235°	Rwy Idg TDZE 418 Apt Elev 439	6051
--	------------------------	---	-------------

RNAV (GPS) RWY 23

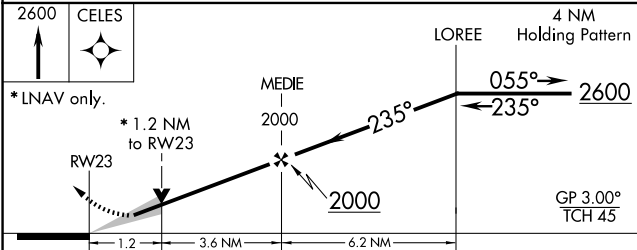
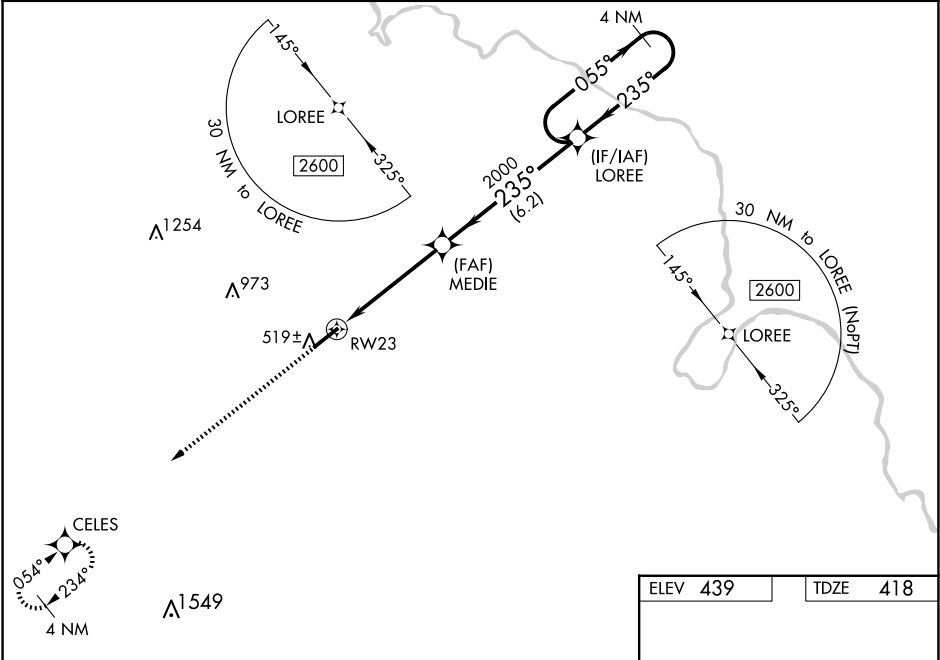
MADISONVILLE RGNL (2I0)

⚠ For uncompensated Baro-VNAV systems, LNAV/VNAV NA below -15°C (5°F) or above 54°C (130°F). Baro-VNAV and VDP NA when using Evansville altimeter setting. DME/DME RNP-0.3 NA. When local altimeter setting not received, use Evansville altimeter setting and increase LPV DA to 773 feet and all visibilities ¼ SM, LNAV/VNAV DA to 829 feet and all visibilities ⅓ SM, increase all MDA 100 feet and LNAV Cats C/D visibility ⅓ SM. For inop ALS, increase LPV and LNAV/VNAV all Cats and LNAV Cat C/D visibility ⅓ SM. For inop ALS when using Evansville altimeter setting, increase LPV and LNAV/VNAV all Cats and LNAV Cats C/D visibility ⅓ SM.

ODALS

MISSED APPROACH:
Climb to 2600 direct
CELES and hold.

AWOS-3 126.475	EVANSVILLE APP CON ★ 124.025 290.9	CLNC DEL 120.1	UNICOM 122.7 (CTAF) 0
--------------------------	--	--------------------------	---------------------------------



CATEGORY	A	B	C	D
LPV DA		674-¾	256 (300-¾)	
LNAV/VNAV DA		730-⅞	312 (300-⅞)	
LNAV MDA	840-¾	422 (500-¾)	840-1⅛	422 (500-1⅛)
CIRCLING	860-1 421 (500-1)	900-1 461 (500-1)	920-1½ 481 (500-1½)	1340-3 901 (1000-3)

ELEV 439

TDZE 418

HIRL Rwy 5-23 0

REIL Rwy 5 0