

VOR/DME GFK 114.3 Chan 90	APP CRS 344°	Rwy Ldg 7351 TDZE 845 Apt Elev 845
---	------------------------	---

VOR RWY 35L
GRAND FORKS INTL (GFK)

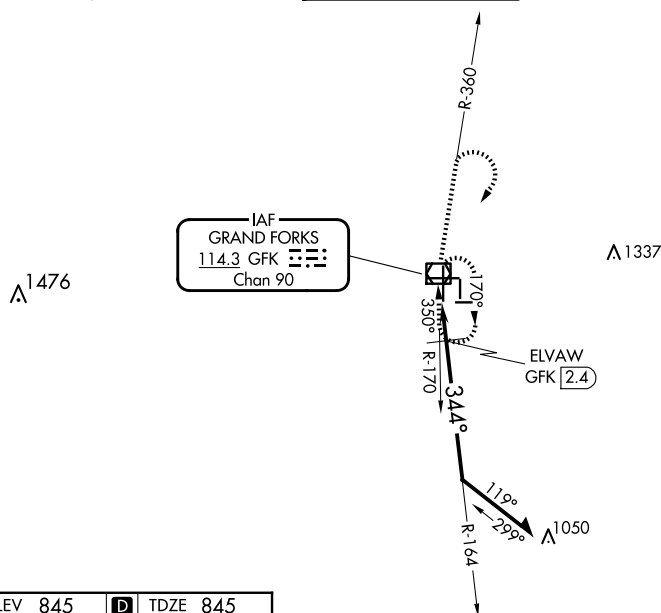
When local altimeter setting not received, use Crockston altimeter setting and increase all MDA 80 feet; increase Cat C/D visibility to 1¼ SM and Circling Cat C visibility ¼ SM. Increase ELVAV fix minimums Cat C/D visibility to RVR 4500 and Circling Cat C visibility ¼ SM. For inop ALS, increase S-35L Cat C/D visibility to 1¾ SM. ELVAV fix minimums: For inop ALS, increase S-35L Cat C/D visibility to RVR 5500.

MALSR



MISSED APPROACH: Climb to 1300 then climb to 3600 on GFK R-360 then right turn direct GFK VOR/DME and hold.

ATIS 119.4	GRAND FORKS APP CON ★ 118.1 318.1	GRAND FORKS TOWER★ 118.4(CTAF) 350.35	GND CON 124.575	CLNC DEL 135.725	UNICOM 122.95
---------------	--------------------------------------	--	--------------------	---------------------	------------------



ELEV 845	D	TDZE 845
MIRL Rwy 9L-27R, 9R-27L and 17L-35R		
HIRL Rwy 17R-35L		
REIL Rwy 17R, 9L, and 27R		

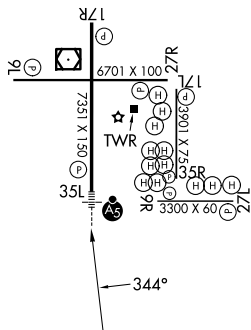


Diagram illustrating navigation parameters for GFK VOR/DME and ELVAW GFK.

Angles and Distances:

- 1300 (upward arrow)
- 3600 (upward arrow)
- GFK R-360 (curved arrow)
- GFK VOR/DME (square with circle)
- 164° (angle between 1300 and 3600)
- 2500 (distance)
- 34° (angle between 164° and 2500)
- 1360* (distance)
- 3.01° (angle between 1360* and 2500)
- TCH 55 (vertical distance)
- 1 NM (horizontal distance)
- 1.4 NM (horizontal distance)

Remain within 10 NM

VGSI and descent angles not coincident (VGSI Angle 2.76/TCH 61).

*1440 when using Crookston altimeter setting.

CATEGORY	A	B	C	D
S-35L	1360/24	515 (600-½)	1360/55	515 (600-1)
C CIRCLING	1360-1	515 (600-1)	1400-1½ 555 (600-1½)	1420-2 575 (600-2)

ELVAW FIX MINIMUMS

S-35L	1220/24	375 (400-½)	1220/40	375 (400-¾)
C CIRCLING	1260-1 415 (500-1)	1300-1 455 (500-1)	1400-1½ 555 (600-1½)	1420-2 575 (600-2)