

RNAV (GPS) RWY 9L
GRAND FORKS INTL (GFK)

⚠ Baro-VNAV and VDP NA when using CKN altimeter setting. For uncompensated Baro-VNAV systems, LNAV/VNAV NA below -21°C or above 54°C. When local altimeter setting not received, use CKN altimeter setting and increase LPV DA to 1106 feet and all visibilities ½ SM. Increase LNAV/VNAV DA to 1156 feet and all visibilities ½ SM. Increase all MDAs 80 feet and LNAV visibility Cat C/D ¼ SM, and Circling visibility Cat C ¼ SM.

ATIS 119.4	GRAND FORKS APP CON★ 118.1 318.1	GRAND FORKS TOWER★ 118.4(CTAF)0 350.35	GND CON 124.575	CLNC DEL 135.725	UNICOM 122.95
---------------	-------------------------------------	---	--------------------	---------------------	------------------

(IAF) BISCA
4000 NoPT
10°
(6.1)

1476
084°
264°
4 NM
HOLD
6000
4000

(IF/IAF) DUCEV
2500
084°
(5.8)

(FAF) ARIDE
4000 to DUCEV
263°
(11.3)

959±
938±
BALEE
1.6 NM to RW09L

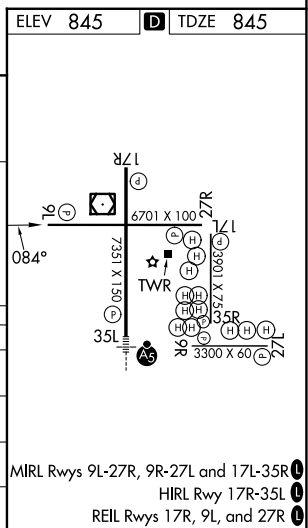
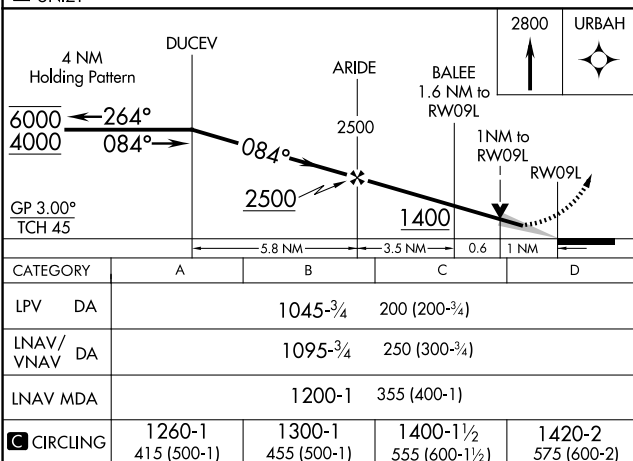
GRAND FORKS GFK
RW09L

Δ 1337

URBAH
4 NM
084°
264°

MSA RW09L 25 NM
3000

ELEV 845	D	TDZE 845
----------	----------	----------



NC-1, 07 AUG 2025 to 04 SEP 2025