

WAAS CH 78104 W27A	APP CRS 264°	Rwy Ldg TDZE 843 Apt Elev 845
--	------------------------	---

RNAV (GPS) RWY 27R

GRAND FORKS INTL (GFK)

RNP APCH - GPS.

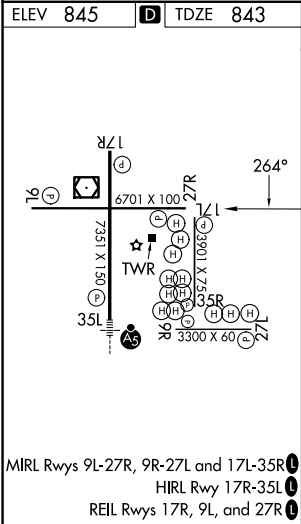
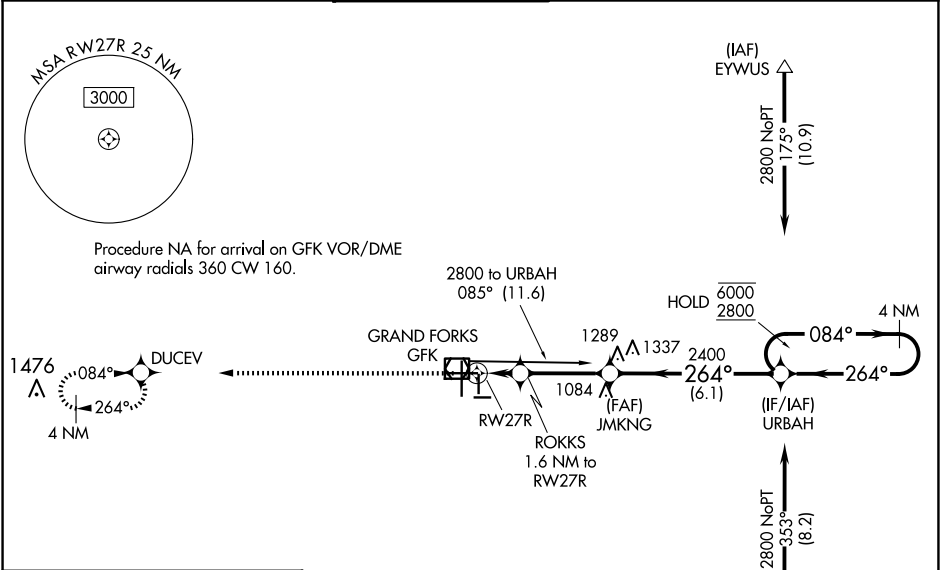
▼

▲

Baro-VNAV and VDP NA when using CKN altimeter setting. For uncompensated Baro-VNAV systems, LNAV/VNAV NA below -21°C or above 54°C. When local altimeter setting not received, use CKN altimeter setting and increase LPV DA to 1104 feet and all visibilities ⅓ SM. Increase LNAV/VNAV DA to 1178 feet and all visibilities ⅓ SM. Increase all MDAs 80 feet and LNAV visibility Cat C/D ⅓ SM, and Circling visibility Cat C ¼ SM.

MISSED APPROACH: Climb to 4000 direct DUCEV and hold, continue climb-in-hold to 4000.

ATIS 119.4	GRAND FORKS APP CON ★ 118.1 318.1	GRAND FORKS TOWER★ 118.4(CTAF) 350.35	GND CON 124.575	CLNC DEL 135.725	UNICOM 122.95
----------------------	---	---	---------------------------	----------------------------	-------------------------



4000	DUCEV	ROKKS 1.6 NM to RW27R	JMKNG	URBAH	4 NM Holding Pattern	GP 3.00° TCH 44
1 NM to RW27R	1380	2400	264°	084°	6000 2800	
1 0.6 3.2 NM	6.1 NM					
CATEGORY	A	B	C	D		
LPV DA		1043-¾	200 (200-¾)			
LNAV/VNAV DA		1117-⅞	274 (300-⅞)			
LNAV MDA		1220-1	377 (400-1)			
CIRCLING	1260-1 415 (500-1)	1300-1 455 (500-1)	1400-1½ 555 (600-1½)	1420-2 575 (600-2)		

NC-1, 07 AUG 2025 to 04 SEP 2025

NC-1, 07 AUG 2025 to 04 SEP 2025