

WAAS CH 63199 W17A	APP CRS 174°	Rwy Ldg TDZE 843 Apt Elev 845
--	------------------------	---

RNAV (GPS) RWY 17R

GRAND FORKS INTL (GFK)

RNP APCH - GPS.

▼

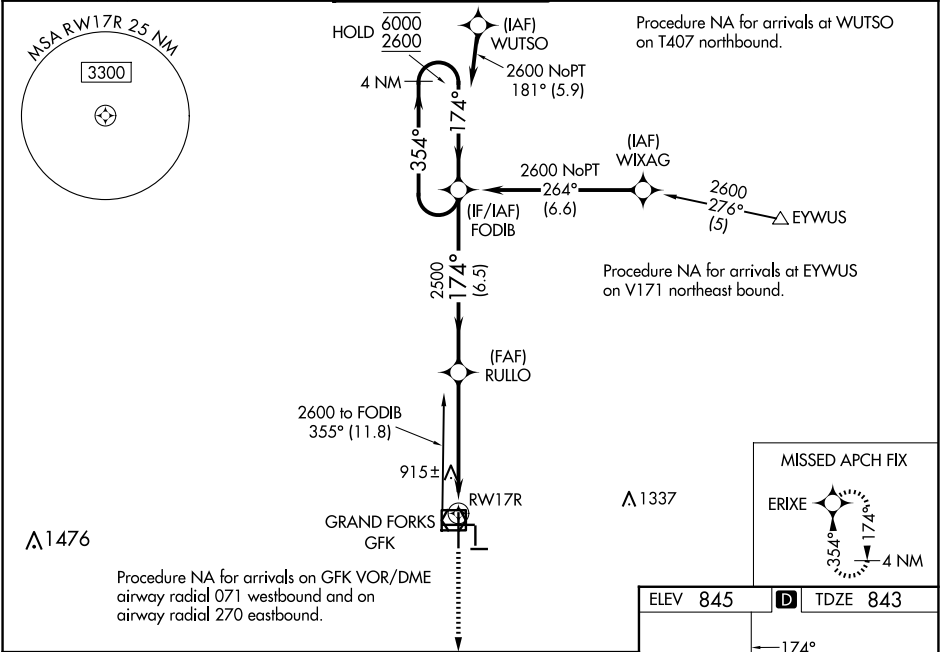
Baro-VNAV NA when using Crookston altimeter setting. For uncompensated Baro-VNAV systems, LNAV/VNAV NA below -20°C or above 54°C. VDP NA with Crookston altimeter setting.

⚠

When local altimeter setting not received, use Crookston altimeter setting and increase all DA 62 feet and all MDA 80 feet and increase LPV and LNAV/VNAV all Cats visibility $\frac{1}{8}$ SM, LNAV Cats C/D visibility $\frac{1}{8}$ SM, and Circling Cat C visibility $\frac{1}{4}$ SM.

MISSED APPROACH:
Climb to 2600 direct ERIXE and hold.

ATIS 119.4	GRAND FORKS APP CON* 118.1 318.1	GRAND FORKS TOWER* 118.4(CTAF) 0 350.35	GND CON 124.575	CLNC DEL 135.725	UNICOM 122.95
----------------------	--	---	---------------------------	----------------------------	-------------------------



2600	ERIXE	FODIB	4 NM Holding Pattern	6000 2600
0.9	0.9 NM to RW17R	2500	174°	354°
0.9	4.2 NM	6.5 NM	GP 3.00° TCH 53	
CATEGORY	A	B	C	D
LPV DA	1043- $\frac{3}{4}$ 200 (200- $\frac{3}{4}$)			
LNAV/VNAV DA	1093- $\frac{3}{4}$ 250 (300- $\frac{3}{4}$)			
LNAV MDA	1180-1 337 (400-1)			
CIRCLING	1260-1 415 (500-1)	1300-1 455 (500-1)	1400-1½ 555 (600-1½)	1420-2 575 (600-2)

