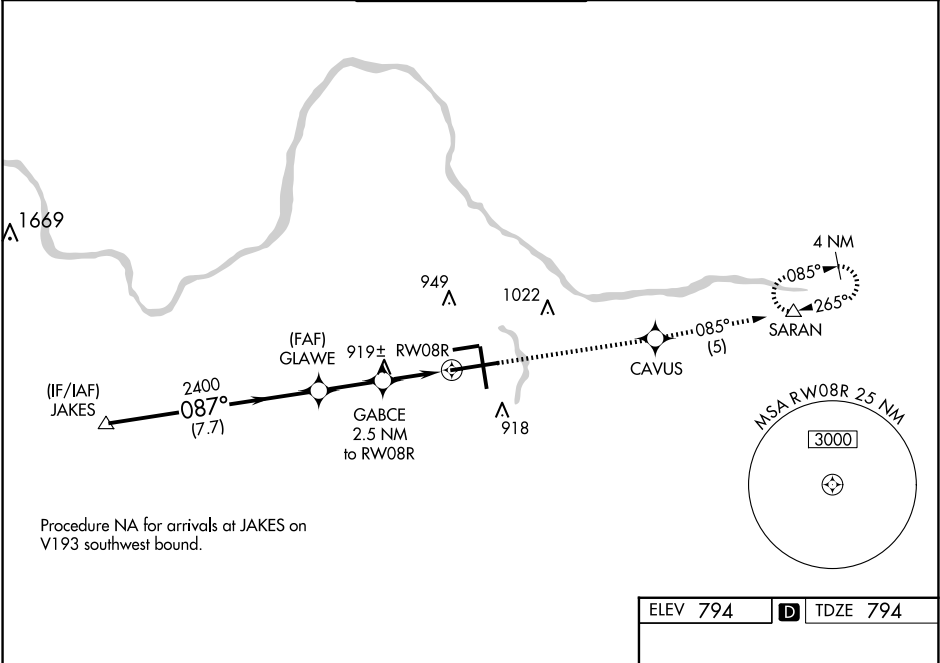


WAAS CH <b>40113</b> <b>W08B</b>	APP CRS <b>087°</b>	Rwy Ldg TDZE <b>794</b> Apt Elev <b>794</b>
--	------------------------	---

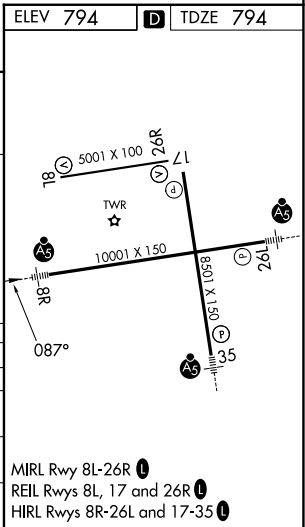
RNAV (GPS) RWY 8R

GERALD R FORD INTL (G.R.R.)

RNP APCH. <div>For uncompensated Baro-VNAV systems, LNAV/VNAV NA below -16°C or above 47°C. For inop ALS, increase LNAV Cat D visibility to RVR 6000. ** RVR 1800 authorized with use of FD or AP or HUD to DA.</div>			MALSR 	MISSED APPROACH: Climb to 2700 direct CAVUS and on track 085° to SARAN and hold.	
ATIS <b>118.725</b>	GREAT LAKES APP CON ★ <b>128.4 257.6</b>	GRAND RAPIDS TOWER★ <b>135.65 (CTAF) 339.8</b>	GND CON <b>121.8</b>	CLNC DEL <b>119.3</b>	UNICOM <b>122.95</b>



	JAKES	GLAWE	GABCE 2.5 NM to RW08R	RW08R
	2700	2400	*1640	
	GP 3.00° TCH 51			
	7.7 NM	2.3 NM	1.4 NM	1.1 NM
CATEGORY	A	B	C	D
LPV DA **	994/24		200 (200-½)	
LNAV/VNAV DA	1297/50		503 (600-1)	
LNAV MDA	1180/24	386 (400-½)	1180/35 386 (400-¾)	1180/50 386 (400-1)
CIRCLING	1260-1	466 (500-1)	1340-1½ 546 (600-1½)	1360-2 566 (600-2)



EC-1, 07 AUG 2025 to 04 SEP 2025

EC-1, 07 AUG 2025 to 04 SEP 2025