
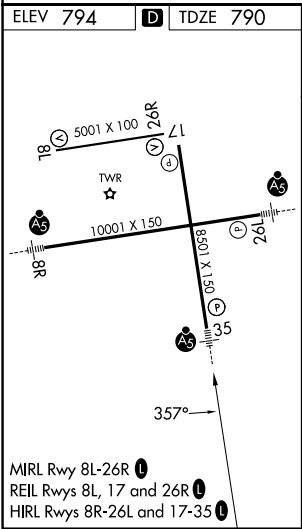
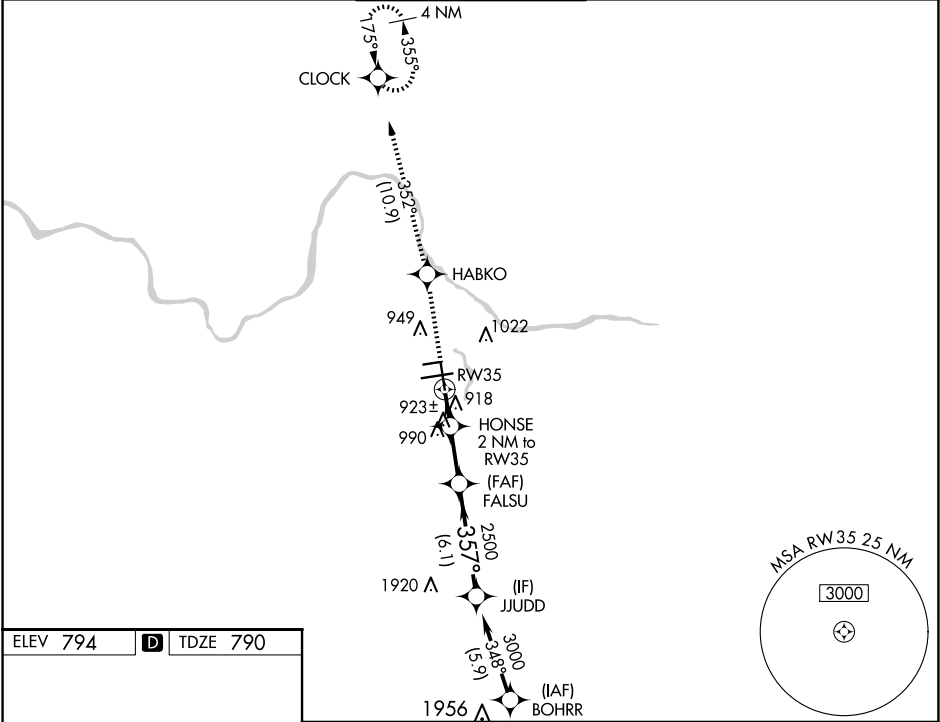





WAAS CH 87112 W35A	APP CRS 357°	Rwy Ldg 8501 TDZE 790 Apt Elev 794
----------------------------------------	------------------------	---------------------------------------------------------------

RNAV (GPS) RWY 35

GERALD R FORD INTL (G.R.R.)

RNP APCH - GPS.			MALSR 	MISSED APPROACH: Climb to 3000 direct HABKO and on track 352° to CLOCK and hold.	
RADAR required for procedure entry.					
▼ ▲ For uncompensated Baro-VNAV systems, LNAV/VNAV NA below -16°C or above 54°C. For inop ALS, increase LNAV Cat D visibility to RVR 6000. * RVR 1800 authorized with use of FD or AP or HUD to DA.					
ATIS 118.725	GREAT LAKES APP CON ★ 128.4 257.6	GRAND RAPIDS TOWER ★ 135.65 (CTAF) 0 339.8	GND CON 121.8	CLNC DEL 119.3	UNICOM 122.95



3000	HABKO	CLOCK	VGSI and RNAV glidepath not coincident (VGSI Angle 3.00/TCH 74).	JUDD
↑		tr 352°		
	HONSE 2 NM to RW35	FALSU 2500	3000	
	1 NM to RW35	1480	2500	GP 3.00° TCH 55
	1 NM 1 NM 3.1 NM 6.1 NM			
CATEGORY	A	B	C	D
LPV DA*	990/24 200 (200-½)			
LNAV/VNAV DA	1236/50 446 (500-1)			
LNAV MDA	1180/24 390 (400-½)	1180/35 390 (400-½)	1180/50 390 (400-1)	
 CIRCLING	1260-1 466 (500-1)	1340-1½ 546 (600-1½)	1360-2 566 (600-2)	