

WAAS CH 82413 W26A	APP CRS 267°	Rwy Ldg 5001 TDZE 787 Apt Elev 794
--	------------------------	---

RNAV (GPS) RWY 26R
GERALD R FORD INTL (GRR)

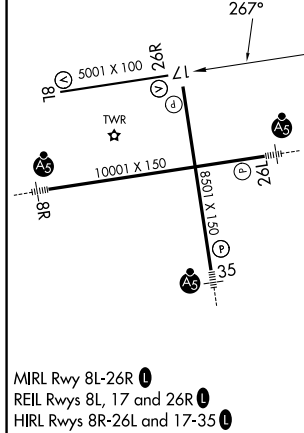
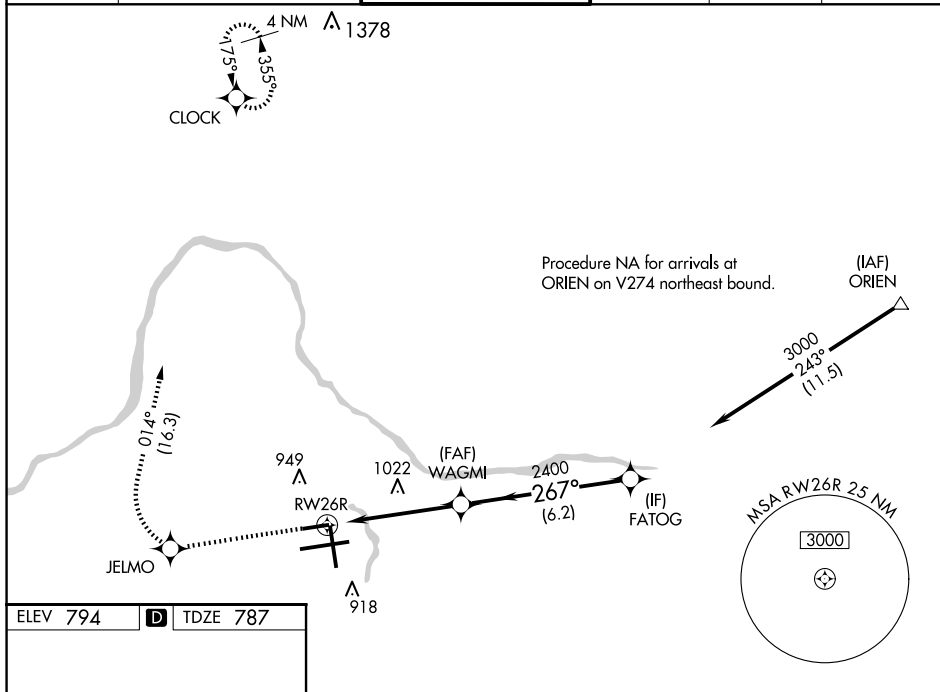
RNP APCH.



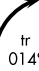

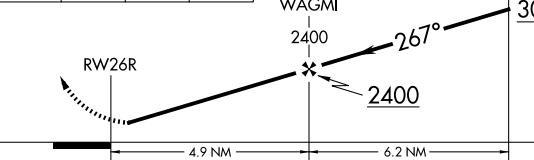

T

For uncompensated Baro-VNAV systems, LNAV/VNAV NA below -16°C or above 47°C. Rwy 26R helicopter visibility reduction below 1 SM NA.

MISSED APPROACH: Climb to 3000
direct JELMO and right turn on track
014° to CLOCK and hold.

ATIS 118.725	GREAT LAKES APP CON ★ 128.4 257.6	GRAND RAPIDS TOWER★ 135.65 (CTAF) 0 339.8	GND CON 121.8	CLNC DEL 119.3	UNICOM 122.95
-----------------	--------------------------------------	--	------------------	-------------------	------------------



3000 		JELMO 	tr 014° 	CLOCK 	VGSI and RNAV glidepath not coincident (VGSI Angle 3.00/TCH 33).	
					FATOG 3000 GP 3.00° TCH 50	
CATEGORY	A		B		C	D
LPV DA	1037-1 250 (300-1)					
RNAV/ VNAV DA	1216-1½ 429 (500-1½)					
RNAV MDA	1280-1 493 (500-1)		1280-1⅜ 493 (500-1⅜)		1280-1½ 493 (500-1½)	
 CIRCLING	1280-1 486 (500-1)		1340-1½ 546 (600-1½)		1360-2 566 (600-2)	