

WAAS CH <b>93912</b> <b>W17A</b>	APP CRS <b>177°</b>	Rwy Ldg <b>8501</b> TDZE <b>789</b> Apt Elev <b>794</b>
--	------------------------	---

RNAV (GPS) RWY 17  
GERALD R FORD INTL (GRR)

RNP APCH.



**MISSED APPROACH:** Climb to 3000 direct HONSE and on track 177° to VIO VOR/DME and hold, continue climb-in-hold to 3000.

ATIS 118.725	GREAT LAKES APP CON ★ 128.4 257.6	GRAND RAPIDS TOWER ★ 135.65 (CTAF) 0 339.8	GND CON 121.8	CLNC DEL 119.3	UNICOM 122.95
-----------------	--------------------------------------	---	------------------	-------------------	------------------

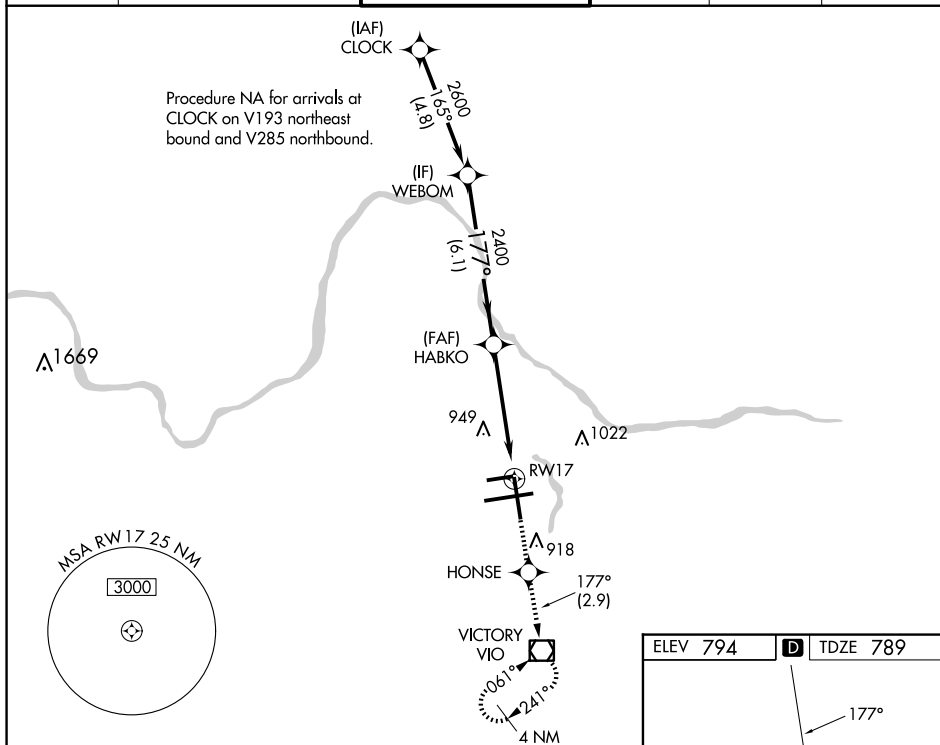


Diagram illustrating the RNAV glidepath not coincident with the VGSi glidepath (WEBOM) for the HABKO approach.

The diagram shows the RNAV glidepath (HABKO) starting at 2400 and descending at 177°. The VGSi glidepath (GP 3.00° TCH 50) is shown as a vertical line. The RNAV glidepath is labeled "RNAV only".

Key distances and altitudes:

- Horizontal distance from VGSi glidepath to RNAV glidepath start: 6.1 NM
- Horizontal distance from RNAV glidepath start to RW17: 3.7 NM
- Horizontal distance from RW17 to end of RNAV glidepath: 1.2 NM
- Altitude at RNAV glidepath start: 2400
- Altitude at RW17: 2400
- Altitude at end of RNAV glidepath: 1360-2

Obstacles shown:

- 3000
- HONSE
- VIO

Other labels:

- GP 3.00° TCH 50
- HABKO
- RW17
- \*1.2 NM to RW17
- \*RNAV only.

