

LOC I-DVS  
**111.9**

APP CRS  
**357°**

Rwy Ldg  
TDZE  
Apt Elev  
**8501**  
**790**  
**794**

ILS or LOC RWY 35

GERALD R FORD INTL (G.R.R.)

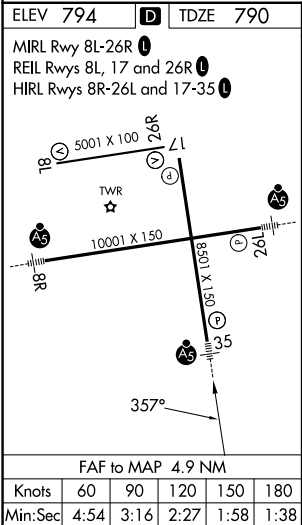
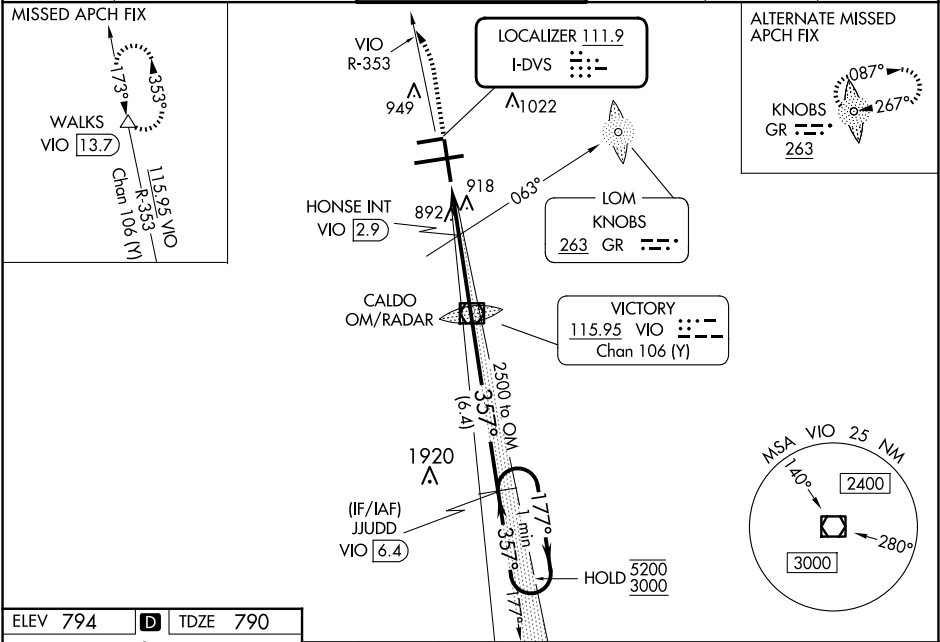
DME required. DME or RADAR required for procedure entry.

HONSE fix minimums: for inop ALS, increase Cat C and D visibility to RVR 6000.  
\*\* RVR 1800 authorized with use of FD or AP or HUD to DA.

MALSR

MISSED APPROACH: Climb to 1300 then climbing left turn to 3000 on VIO VOR/DME R-353 to WALKS 13.7 DME and hold.

ATIS <b>118.725</b>	GREAT LAKES APP CON ★ <b>128.4 257.6</b>	GRAND RAPIDS TOWER ★ <b>135.65 (CTAF) 0 339.8</b>	GND CON <b>121.8</b>	CLNC DEL <b>119.3</b>	UNICOM <b>122.95</b>
------------------------	---------------------------------------------	------------------------------------------------------	-------------------------	--------------------------	-------------------------



1300	3000	WALKS	VGSI and ILS glidepath not coincident (VGSI Angle 3.00/TCH 74).		One Minute Holding Pattern	
VIO R-353	VIO R-353	VIO VOR/DME CALDO OM/RADAR	JUDD VIO 6.4	177°	5200	
*LOC only.	*VIO 3.8	HONSE INT VIO 2.9	2412	357°	3000	
VIO 4.9	VIO 3.8	*1480	2500	357°	5200	GS 3.00° TCH 55
1.1 NM	0.9 NM	2.9 NM	6.4 NM			
CATEGORY	A	B	C	D		
S-ILS 35**	990/24		200 (200-½)			
S-LOC 35	1480/24	690 (700-½)	1480-1½	690 (700-1½)		
CIRCLING	1480-1	686 (700-1)	1480-2 686 (700-2)	1480-2¼ 686 (700-2¼)		
HONSE MINIMUMS (ADF OR DME REQUIRED)						
S-LOC 35	1200/24	410 (500-½)	1200/40	410 (500-¾)		
CIRCLING	1260-1	466 (500-1)	1340-1½ 546 (600-1½)	1360-2 566 (600-2)		

EC-1, 07 AUG 2025 to 04 SEP 2025

EC-1, 07 AUG 2025 to 04 SEP 2025