

WAAS CH <b>82502</b> <b>W23A</b>	APP CRS <b>231°</b>	Rwy Ldg TDZE <b>1224</b> Apt Elev <b>1232</b>
--	------------------------	---

RNAV (GPS) RWY 23

BRainerd Lakes RGNL (BRD)

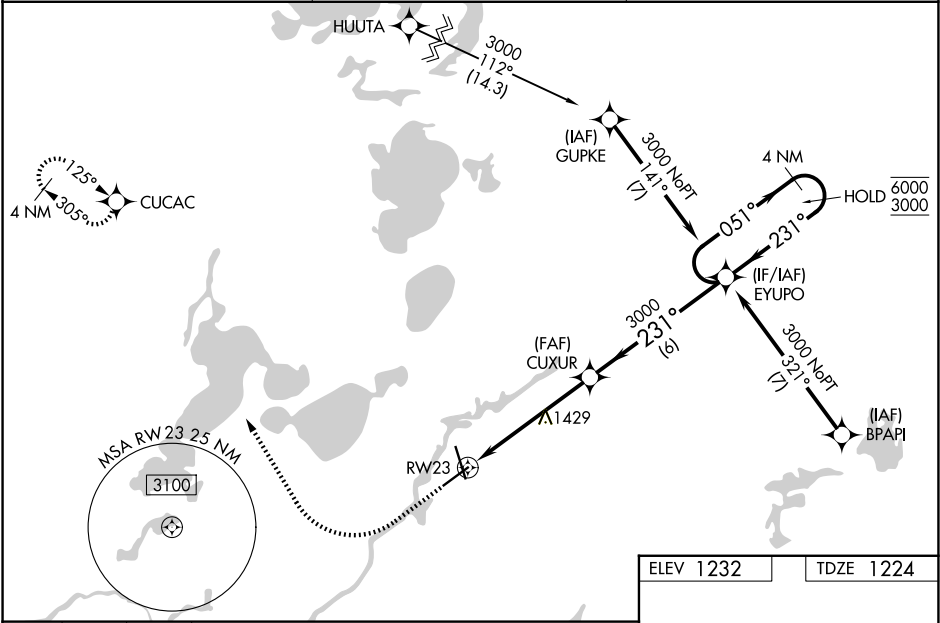
RNP APCH - GPS.

For uncompensated Baro-VNAV systems, LNAV/VNAV NA below -21°C or above 54°C. Baro-VNAV and VDP NA when using AIT altimeter setting. When local altimeter setting not received, use AIT altimeter setting and increase LPV DA to 1476 feet; increase LNAV/VNAV DA to 1553 feet; increase all MDAs 60 feet and LNAV visibility Cat C/D ¼ SM, and Circling visibility Cat C/D ¼ SM. For inop ALS when using AIT altimeter setting, increase LNAV/VNAV Cats C/D visibility to 1 ¾ SM. For inop ALS, increase LNAV/VNAV all Cats visibility ¾ SM.

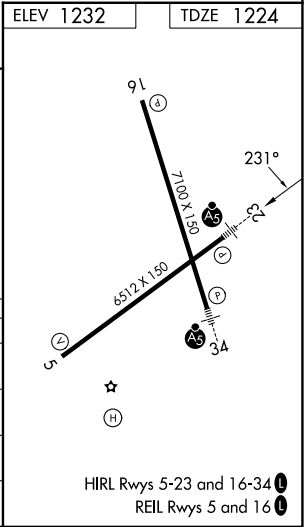
MALSR

MISSED APPROACH: Climb to 1800 then climbing right turn to 3300 direct CUCAV and hold.

ASOS <b>126.775</b>	MINNEAPOLIS CENTER <b>118.05 239.0</b>	UNICOM <b>122.7(CTAF) 0</b>
------------------------	---	--------------------------------



<div><div>1800</div><div>3300</div><div>CUCAC</div></div>		CUXUR		EYUPO		4 NM Holding Pattern	
<div><div>1.3 NM to RW23</div><div>RW23</div></div>		<div>3000</div> <div>231°</div> <div>3000</div>		<div>051°</div> <div>231°</div> <div>6000</div> <div>3000</div>		<div>GP 3.00°</div> <div>TCH 50</div>	
<div>1.3 NM</div> <div>4.1 NM</div> <div>6 NM</div>		CATEGORY		A	B	C	D
LPV DA				1424-1/2 200 (200-1/2)			
LNAV/VNAV DA				1501-1/2 277 (300-1/2)			
LNAV MDA		1680-1/2 456 (500-1/2)		1680-7/8 456 (500-7/8)			
CIRCLING		1700-1 468 (500-1)		1780-1 548 (600-1 1/2)		1860-2 628 (700-2)	



NC-1, 07 AUG 2025 to 04 SEP 2025

NC-1, 07 AUG 2025 to 04 SEP 2025