

|  |                        |   |
|--|------------------------|---|
| WAAS<br>CH <b>56537</b><br><b>W06A</b> | APP CRS<br><b>063°</b> | Rwy Idg<br>TDZE <b>722</b><br>Apt Elev <b>722</b> |
|--|------------------------|---|

RNAV (GPS) RWY 6

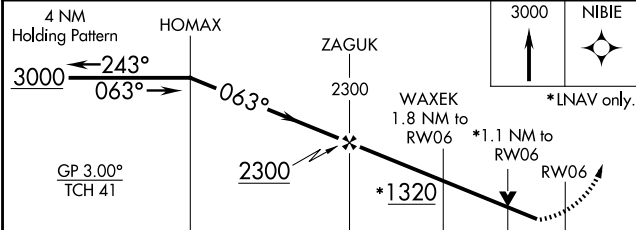
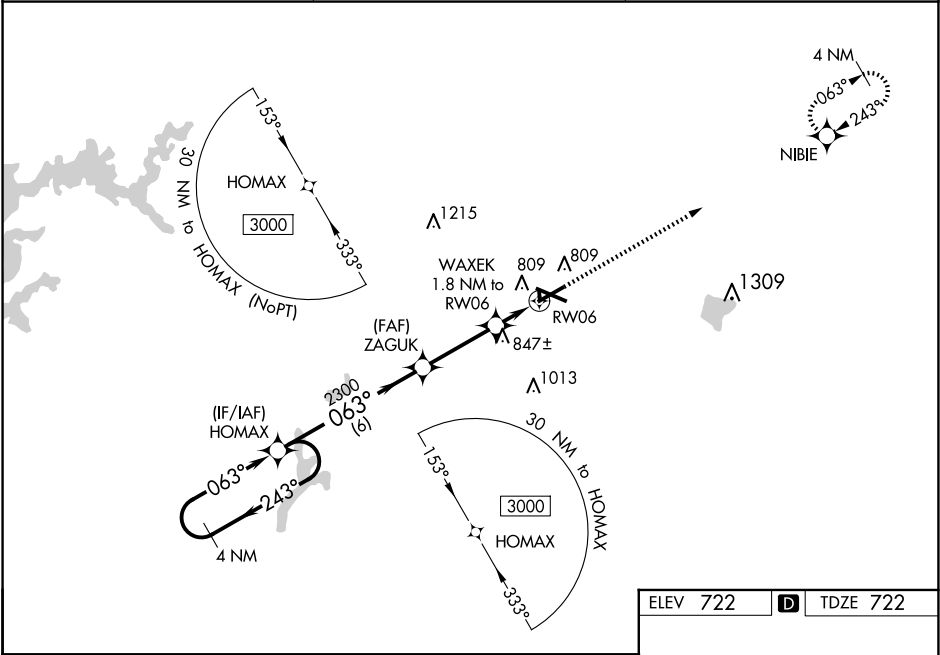
COLES COUNTY MEML (MTO)

⚠

DME/DME RNP-0.3 NA. When local altimeter setting not received, use Champaign/Urbana altimeter setting and increase all DA 82 feet, increase MDA 100 feet, increase LPV, LNAV/VNAV all Cats, LNAV Cats C/D and Circling Cat D visibility ¼ mile. Baro-VNAV and VDP NA when using Champaign/Urbana altimeter setting. Rwy 6 helicopter visibility reduction below ¼ SM NA. For uncompensated Baro-VNAV systems, LNAV/VNAV NA below -19°C (-2°F) or above 54°C (130°F). Circling NA to Rwys 18 and 36.

MISSED APPROACH:  
Climb to 3000 direct NIBIE and hold.

|                        |  |                                 |
|------------------------|--|---------------------------------|
| ASOS<br><b>118.475</b> | CHAMPAIGN APP CON ★<br><b>132.85 290.225</b> | UNICOM<br><b>122.7 (CTAF) 0</b> |
|------------------------|--|---------------------------------|



ELEV 722    **D**    TDZE 722

MIRL Rwy 6-24 **0**  
HIRL Rwy 11-29 **0**  
REIL Rwys 6, 11, and 24 **0**

| CATEGORY          | A                                   | B                     | C  | D  |
|-------------------|-------------------------------------|-----------------------|--|--|
| LPV DA            | 972-7 <sup>5</sup> / <sub>8</sub>   |                       | 250 (300-7 <sup>5</sup> / <sub>8</sub> )                                       |  |
| LNAV/VNAV DA      | 1124-13 <sup>5</sup> / <sub>8</sub> |                       | 402 (500-13 <sup>5</sup> / <sub>8</sub> )                                      |  |
| LNAV MDA          | 1100-1                              | 378 (400-1)           | 1100-1 <sup>1</sup> / <sub>8</sub>   | 378 (400-1 <sup>1</sup> / <sub>8</sub> ) |
| <b>C</b> CIRCLING | 1160-1<br>438 (500-1)               | 1180-1<br>458 (500-1) | 1240-1 <sup>1</sup> / <sub>2</sub><br>518 (600-1 <sup>1</sup> / <sub>2</sub> ) | 1380-2<br>658 (700-2)                    |