

WAAS CH <b>93510</b> <b>W29A</b>	APP CRS <b>296°</b>	Rwy Idg TDZE <b>718</b> Apt Elev <b>722</b>
--	------------------------	---

RNAV (GPS) RWY 29

COLES COUNTY MEML (MTO)

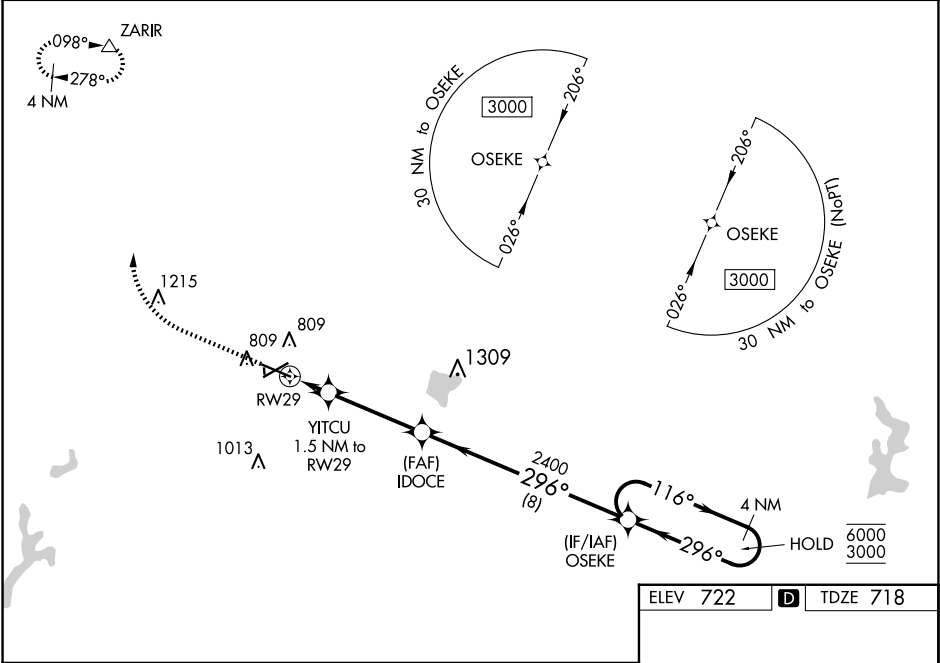
RNP APCH.

Circling NA to Rwy 18 and 36. For uncompensated Baro-VNAV systems, LNAV/VNAV NA below -19°C or above 54°C. For inop ALS, increase LNAV/VNAV all Cats visibility to ¾ SM and increase LNAV Cat C/D visibility to 1 SM.

MALSR

MISSED APPROACH:  
Climb to 2000 then climbing right turn to 3000 direct ZARIR and hold.

ASOS <b>118.475</b>	CHAMPAIGN APP CON ★ <b>132.85 290.225</b>	UNICOM <b>122.7 (CTAF) 0</b>
------------------------	--	---------------------------------



2000	3000	ZARIR		
<div></div>	<div></div>	<div></div>		
* LNAV only.	YITCU 1.5 NM to RW29	IDOCF	OSEKE	4 NM Holding Pattern
<div></div>	<div></div>	<div></div>	<div></div>	<div></div>
	* 1 NM to RW29	2400	296°	116° → 6000 ← 296° 3000
	<div></div>	<div></div>	<div></div>	GP 3.00° TCH 51
	1 NM	0.5	3.6 NM	8 NM
CATEGORY	A	B	C	D
LPV DA	918-½		200 (200-½)	
LNAV/VNAV DA	1014-½		296 (300-½)	
LNAV MDA	1080-½	362 (400-½)	1080-⅝	362 (400-⅝)
CIRCLING	1160-1 438 (500-1)	1180-1 458 (500-1)	1240-1½ 518 (600-1½)	1380-2 658 (700-2)

ELEV 722 **D** TDZE 718

MIRL Rwy 6-24 0  
HIRL Rwy 11-29 0  
REIL Rwy 6, 11, and 24 0