

LOC I-MTO
111.1

APP CRS
296°

Rwy Idg
TDZE
Apt Elev
6501
718
722

ILS or LOC RWY 29

COLES COUNTY MEML (MTO)

DME required for procedure entry from BIB VORTAC.

▼

▲ NA

DME from MTO DME. Simultaneous reception of I-MTO and MTO DME required. Circling NA to Rwy's 18 and 36.

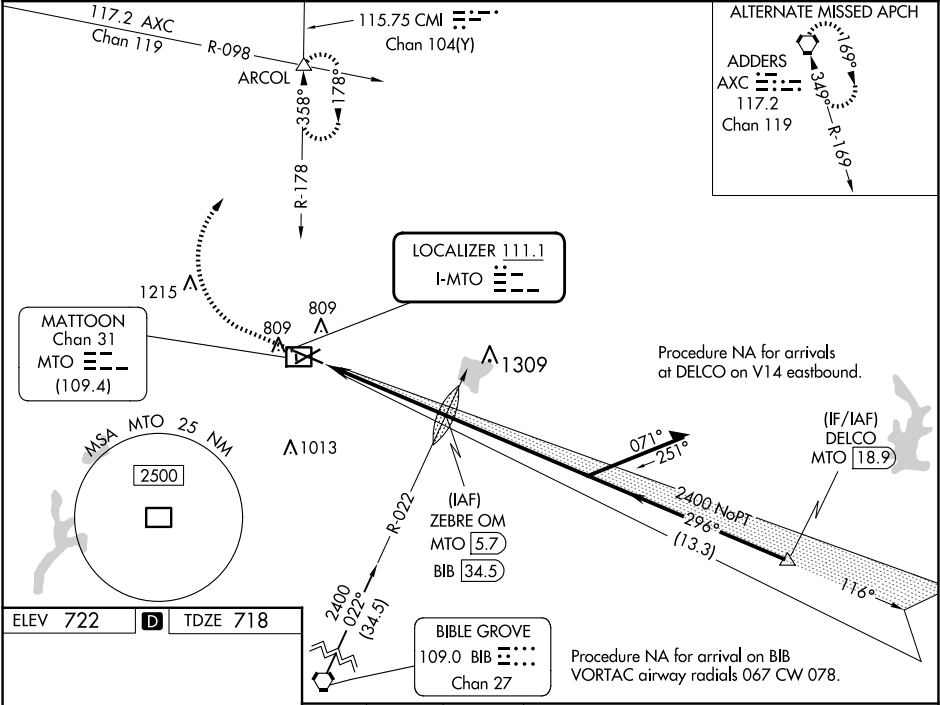
MALSR
AS

MISSED APPROACH: Climb to 1200 then climbing right turn to 2500 on CMI R-178 to ARCOL INT and hold.

ASOS
118.475

CHAMPAIGN APP CON★
132.85 290.225

UNICOM
122.7 (CTAF) 0



CATEGORY	A	B	C	D
S-ILS 29	918-1/2		200 (200-1/2)	
S-LOC 29	1160-1/2	442 (500-1/2)	1160-7/8	442 (500-7/8)
CIRCLING	1160-1 438 (500-1)	1180-1 458 (500-1)	1240-1 1/2 518 (600-1 1/2)	1380-2 658 (700-2)

EC-3, 07 AUG 2025 to 04 SEP 2025

EC-3, 07 AUG 2025 to 04 SEP 2025