

VORTAC LAX <b>113.6</b> Chan <b>83</b>	APP CRS <b>135°</b>	Rwy Idg <b>4460</b> TDZE <b>96</b> Apt Elev <b>103</b>
--	------------------------	--

VOR RWY 11L  
ZAMPERINI FLD (TOA)

**▼** Circling NA southwest of Rwy 11R-29L. When local altimeter setting not received, except for operators with approved weather reporting service, use Los Angeles Intl altimeter setting and increase all MDA 40 feet and increase S-11L Cat A visibility and Circling Cat C visibility  $\frac{1}{2}$  SM. Rwy 11L helicopter visibility reduction below  $\frac{3}{4}$  SM NA.


**MISSED APPROACH:** Climbing left turn to 3000 on heading 075° and on LAX VORTAC R-123 to WILMA INT/LAX 13 DME and hold, continue climb-in-hold to 3000.

ATIS 125.6	SOCAL APP CON 124.3 363.2 (Rwys 11L, 11R) 127.2 269.6 (Rwys 29L, 29R)	TORRANCE TOWER* 133.075 257.8 (NORTH) 124.0 (CTAF) 0 257.8 (SOUTH)	GND CON 120.9	UNICOM 122.95
---------------	---	--	------------------	------------------

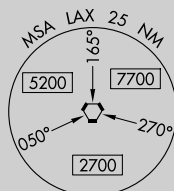
△ 2908

IAF  
SANTA MONICA  
110.8 SMO  $\ddot{=}$   
Chan 45

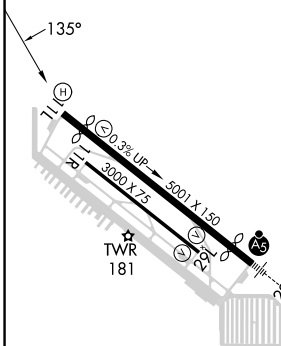
Procedure NA for arrivals  
at SMO VORTAC  
on T245-247-249 northwest bound.

LOS ANGELES  
113.6 LAX   
Chan 83

SEAL BEACH  
115.7 SLI   
Chan 104



ELEV	103		TDZE	96
------	-----	--	------	----



REIL Rwy 29L  
MIRL Rwy 11L-29R and 11R-29L

FAF to MAP 2.2 M

Knots	60	90	120	150	180
Min:Sec	2:12	1:28	1:06	0:53	0:44

TORRANCE, CALIFORNIA

Amdt 16 15SEP16

33°48'N-118°20'W

ZAMPERINI FLD (TOA)  
VOR RWY 11L

SW-3, 07 AUG 2025 to 04 SEP 2025

