

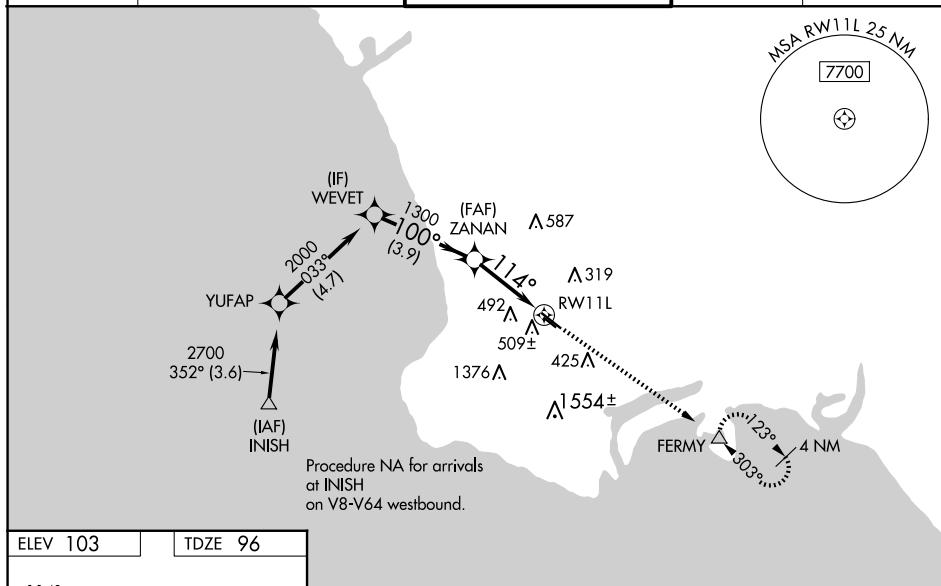
WAAS CH 61125 W11A	APP CRS 114°	Rwy Idg 4460 TDZE 96 Apt Elev 103
--	------------------------	--

RNAV (GPS) RWY 11L
ZAMPERINI FLD (TOA)

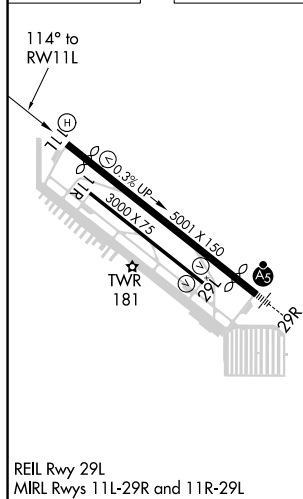
▼ For uncompensated Baro-VNAV systems, LNAV/VNAV NA below 3°C (38°F) or above 54°C (130°F). Circling NA southwest of Rwy 11R-29L. Baro-VNAV and VDP NA when using Los Angeles Intl altimeter setting. DME/DME RNP-0.3 NA. When local altimeter setting not received except for operators with approved weather reporting service, use Los Angeles Intl altimeter setting: increase LPV DA to 390 feet and LNAV/VNAV DA to 714 feet and all MDA 40 feet; increase LNAV/VNAV all Cats visibility, LNAV Cat C visibility and Circling Cat C visibility ½ SM. Rwy 11L helicopter visibility reduction below ¾ SM NA.

MISSED APPROACH: Climb to 2700 direct FERM and hold, continue climb-in-hold to 2700.

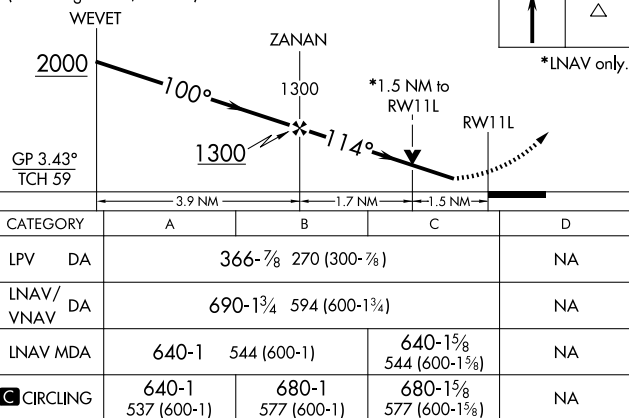
ATIS 125.6	SOCAL APP CON 124.3 363.2 (Rwys 11L, 11R) 127.2 269.6 (Rwys 29L, 29R)	TORRANCE TOWER* 133.075 257.8 (NORTH) 124.0 (CTAF) 0 257.8 (SOUTH)	GND CON 120.9	UNICOM 122.95
----------------------	---	---	-------------------------	-------------------------




ELEV 103		TDZE 96
----------	--	---------



VGSI and RNAV glidepath not coincident
(VGSI Angle 3.50/TCH 10).



CATEGORY	A	B	C	D
LPV DA	366-7 ⁸ / ₈ 270 (300-7 ⁸ / ₈)			NA
LNAV/ VNAV	690-1 ³ / ₄ 594 (600-1 ³ / ₄)			NA
LNAV MDA	640-1	544 (600-1)	640-1 ⁵ / ₈ 544 (600-1 ⁵ / ₈)	NA
 CIRCLING	640-1 537 (600-1)	680-1 577 (600-1)	680-1 ⁵ / ₈ 577 (600-1 ⁵ / ₈)	NA