

APP CRS	Rwy Idg	6500
354°	TDZE	544
	Apt Elev	544

RNAV (GPS) RWY 35
ST LOUIS RGNL (ALN)

RNP APCH.

T Visibility reduction by helicopters NA. When local altimeter setting not received, use St Louis Lambert Intl altimeter setting and increase all MDA 60 feet, increase LNAV Cat C/D visibility $\frac{1}{8}$ SM and Circling Cat C/D visibility $\frac{1}{4}$ SM. When VGSI inop, straight-in/Circling Rwy 35 procedure and Circling Rwy 17 NA at night.

MISSED APPROACH: Climb to 2200 direct JETIK and hold.

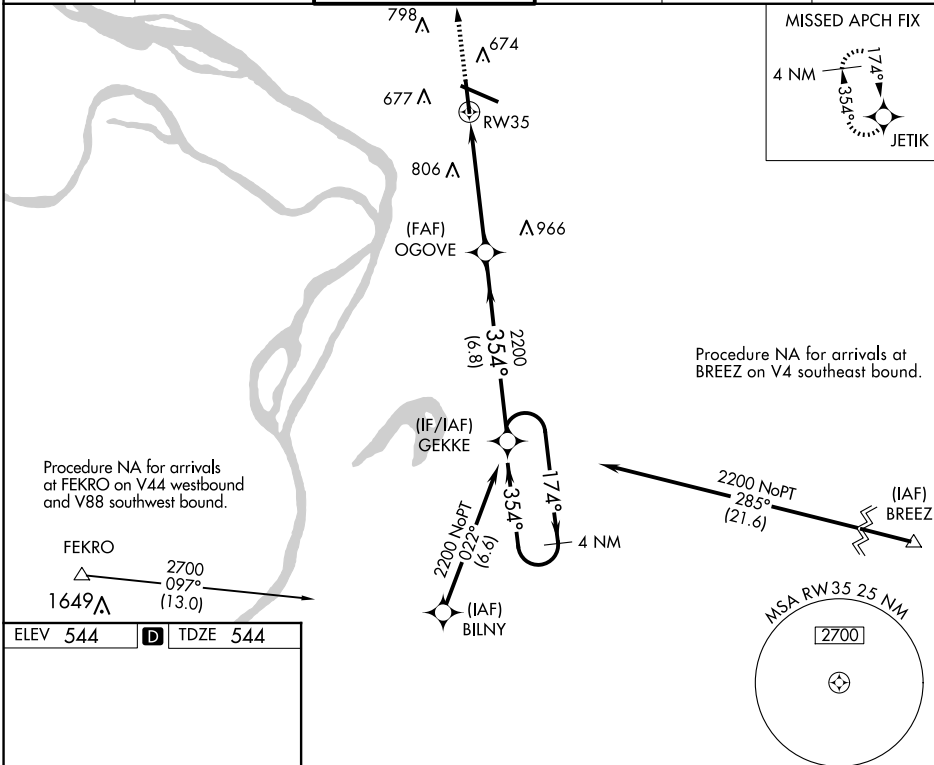
ATIS
128.0

ST LOUIS APP CON
124.2 353.9

REGIONAL TOWER★
26.0 (CTAF) L 239.0

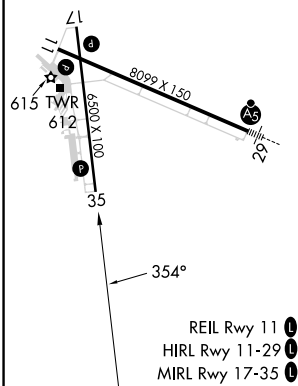
GND CON
120,2

CLNC DEL
120.2
(when tower closed)

UNICOM
122.95

ELEV 544	D	TDZE 544
----------	----------	----------

Downloaded from ascelibrary.org by University of California, San Diego on 06/01/15. Copyright ASCE, For All Rights Reserved, No part of this document may be reproduced without written permission from ASCE.

REIL Rwy 11 **L**HIRL Rwy 11-29 **L**

MIRL Rwy 17-35 L

Visual Segment - Obstacles.

4 NM Holding Pattern

2200 JETIK

OGOVE

GEMKE

RW35

5.1 NM

6.8 NM

354°

174°

2200

CATEGORY	A	B	C	D
LNAV MDA	1020-1	476 (500-1)	1020-1 $\frac{3}{8}$	476 (500-1 $\frac{3}{8}$)
CIRCLING	1020-1	476 (500-1)	1160-1 $\frac{3}{4}$ 616 (700-1 $\frac{3}{4}$)	1200-2 656 (600-2)

ALTON/ST. LOUIS, ILLINOIS

Amdt 1C 25MAR21

38°53'N-90°03'W

ST LOUIS RGNL (ALN)

RNAV (GPS) RWY 35