

WAAS CH <b>77507</b> <b>W29A</b>	APP CRS <b>294°</b>	Rwy Idg TDZE <b>531</b> Apt Elev <b>544</b>
--	------------------------	---

RNAV (GPS) RWY 29

ST LOUIS RGNL (ALN)

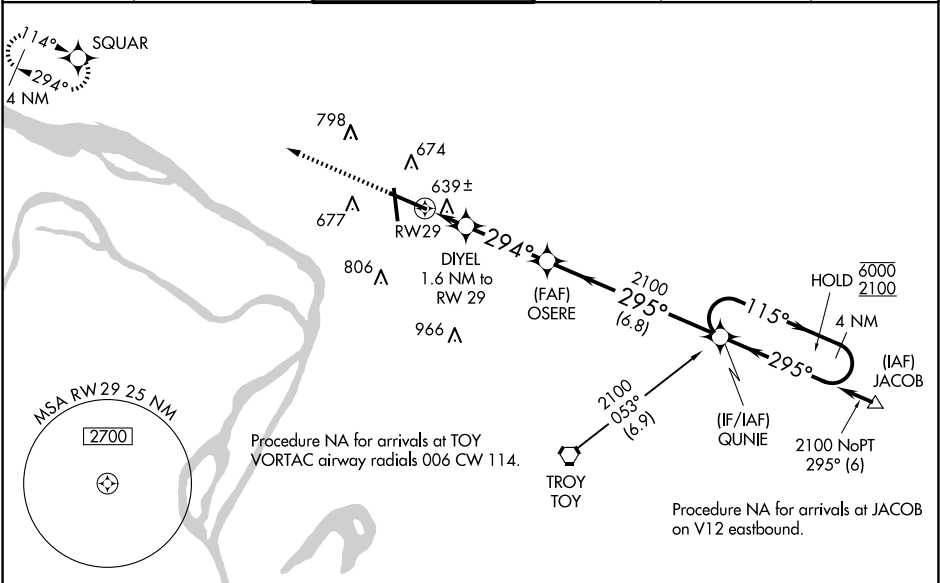
RNP APCH.

For uncompensated Baro-VNAV systems, LNAV/VNAV NA below -16°C or above 54°C. For inop ALS, increase LNAV/VNAV all Cats visibility to ¾ SM and LNAV Cat C/D visibility to 1 SM.

MALSR

MISSED APPROACH:  
Climb to 2400 direct  
SQUAR and hold.

ATIS <b>128.0</b>	ST LOUIS APP CON <b>124.2 353.9</b>	REGIONAL TOWER* <b>126.0 (CTAF) 0 239.0</b>	GND CON <b>120.2</b>	CLNC DEL <b>120.2</b> (when tower closed)	UNICOM <b>122.95</b>
----------------------	--	--	-------------------------	---	-------------------------



ELEV **544** **D** TDZE **531**

REIL Rwy 11 **1**  
HIRL Rwy 11-29 **1**  
MIRL Rwy 17-35 **1**

CATEGORY				
LPV DA				
LNAV/VNAV DA				
LNAV MDA				
CIRCLING				