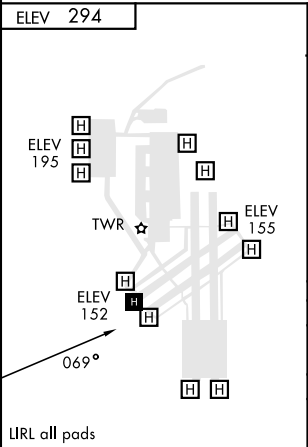
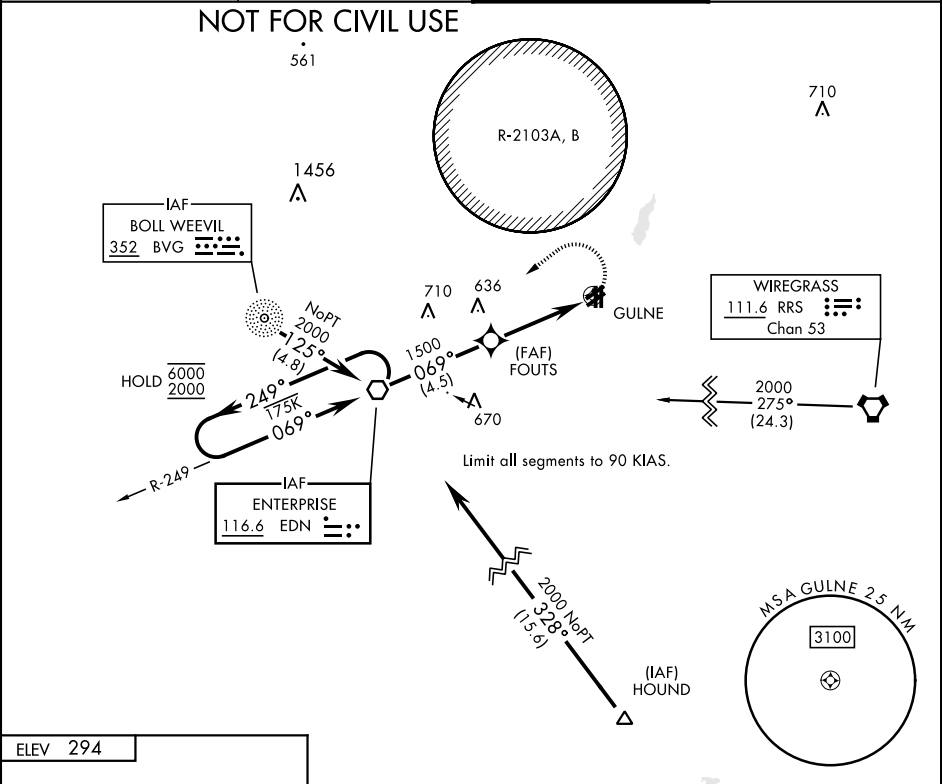


APCH CRS	Rwy Idg	N/A
069°	TDZE	N/A
	Arpt Elev	294

AL-5176 [USA]

RNP APCH-GPS	MISSED APPROACH: Climbing left turn to 2000 direct to EDN VOR and hold.
▼ When local altimeter setting not received, use Cairns AAF altimeter setting. Visibility reduction by helicopters NA.	

ATIS 361.1	CAIRNS APP CON 133.45 239.275	LOWE TOWER ★ 141.3 289.15	GND CON 357.15
---------------	----------------------------------	------------------------------	-------------------



One Minute Holding Pattern		VOR	2000	EDN
6000 2000		249° 069°	2000	
		069°	1500	
		FOUTS	2.75° TCH 40	
		GULNE	4 NM	
CATEGORY	COPTER			
LNAV-MDA	840-1	546	(600-1)	
CAIRNS AAF ALTIMETER SETTING MINIMUMS				
LNAV-MDA	860-1	566	(600-1)	

SE-4, 07 AUG 2025 TO 04 SEP 2025

SE-4, 07 AUG 2025 TO 04 SEP 2025