

BEMIDJI, MINNESOTA

AL-5174 (FAA)

21280

WAAS CH 99711 W31A	APP CRS 313°	Rwy Idg 7002 TDZE 1389 Apt Elev 1391
--	------------------------	---

RNAV (GPS) RWY 31

BEMIDJI RGNL (BJI)

RNP APCH.



For uncompensated Baro-VNAV systems, LNAV/VNAV NA below -17°C or above 46°C. For inop ALS, increase LNAV/VNAV all Cats and LNAV Cats C/D visibility to 1¼ SM.


MALSR



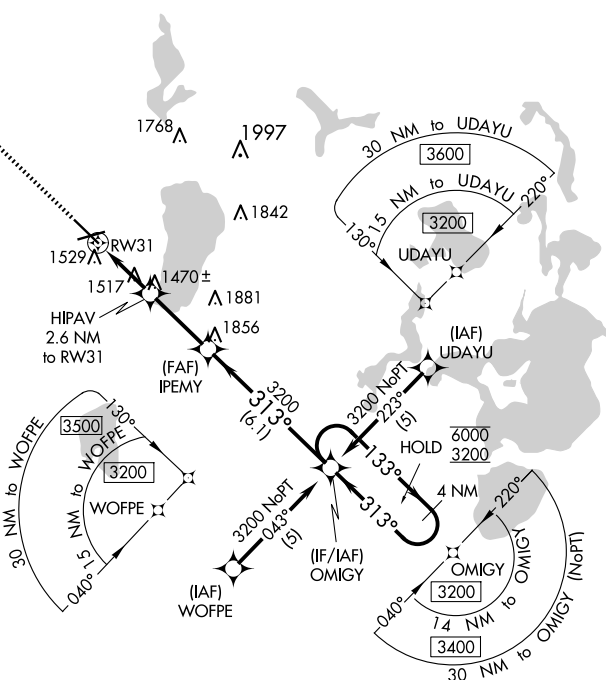
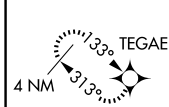
MISSED APPROACH:
Climb to 3200 direct
TEGAE and hold.

AWOS-3
119.275

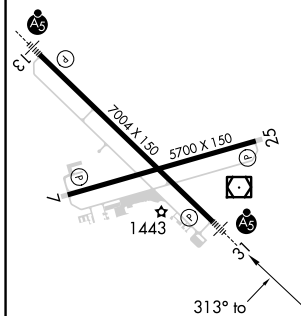
MINNEAPOLIS CENTER
134.75 251.1

UNICOM
122.8 (CTAF) 


MISSED APCH FIX



ELEV	1391	D	TDZE	1389
------	------	----------	------	------

HIRL Rwy 13-31 **L**MIRL Rwy 7-25 **L**

REIL Rwys 7 and 25 L

CATEGORY		A	B	C	D
LPV	DA	1589- $\frac{1}{2}$		200 (200- $\frac{1}{2}$)	
LNAV/ VNAV	DA	1825-1		436 (500-1)	
LNAV	MDA	1780- $\frac{1}{2}$	391 (400- $\frac{1}{2}$)	1780- $\frac{5}{8}$ 391 (400- $\frac{5}{8}$)	1780-1 391 (400-1)
 CIRCLING		1840-1 449 (500-1)	1860-1 469 (500-1)	1860-1 $\frac{1}{2}$ 469 (500-1 $\frac{1}{2}$)	1960-2 569 (600-2)

BEMIDJI, MINNESOTA

Amdt 1B 30JAN20

BEMIDJI RGNL (BJI)

47°31'N-94°56'W

RNAV (GPS) RWY 31

NC-1, 07 AUG 2025 to 04 SEP 2025

NC-1, 07 AUG 2025 to 04 SEP 2025