

WAAS CH <b>50440</b> <b>W33A</b>	APP CRS <b>325°</b>	Rwy Idg TDZE <b>41</b> Apt Elev <b>47</b>
--	------------------------	---

RNAV (GPS) RWY 33R

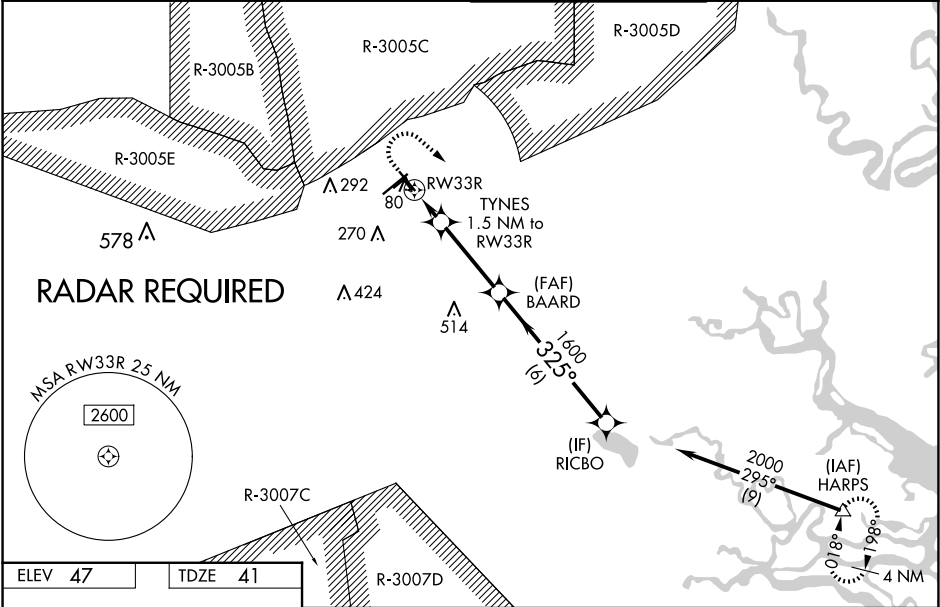
WRIGHT AAF (FORT STEWART)/MIDCOAST RGNL (LHW)

RNP APCH.

⚠ Circling to Rwy 6R, 24L, 15R, 33L, 6L, 24R NA at night. For uncompensated Baro-VNAV systems, LNAV/VNAV NA below -6°C or above 54°C. When local altimeter setting not received, use Savannah/Hilton Head Intl altimeter setting: increase LPV DA to 346 feet, LNAV/VNAV DA to 379 feet and all visibilities  $\frac{1}{8}$  mile; increase all MDAs 60 feet and LNAV and Circling Cats C and D visibility  $\frac{1}{4}$  mile. Baro-VNAV NA when using Savannah Hilton Head Intl altimeter. Circling NA northeast of Rwy 15L-33R. Procedure NA when R-3005C/D or R-3007C is active and LHW Tower is closed.

MISSED APPROACH: Climb to 500 then climbing right turn to 4000 direct HARPS and hold.

ATIS ★ <b>118.475</b>	SAVANNAH APP CON★ <b>120.4 353.775</b>	WRIGHT TOWER ★ <b>126.25 (CTAF) 0 269.275</b>	GND CON <b>121.7 273.575</b>
--------------------------	---	--	---------------------------------



ELEV 47	TDZE 41	500	4000	HARPS	VGSI and descent angles not coincident (VGSI Angle 3.00/TCH 65).
<p>*LNAV only.</p> <p>RYNES 1.5 NM to RWY 33R</p> <p>BAARD 1600</p> <p>RWY 33R</p> <p>560*</p> <p>1.5 NM 3.3 NM 6 NM</p>					
CATEGORY		A	B	C	D
LPV DA			291-1	250 (300-1)	
LNAV/VNAV DA			324-1	283 (300-1)	
LNAV MDA			420-1	379 (400-1)	
CIRCLING		560-1 513 (600-1)	620-1 573 (600-1)	680-1 $\frac{3}{4}$ 633 (700-1 $\frac{3}{4}$ )	680-2 633 (700-2)