

WAAS CH 72812 W35A	APP CRS 354°	Rwy Ldg 6500 TDZE 844 Apt Elev 846
---------------------------------	------------------------	---

RNAV (GPS) RWY 35

MONROE COUNTY (BMG)

▼ For uncompensated Baro-VNAV systems, LNAV/VNAV NA below -16°C (4°F) or above 47°C (116°F). DME/DME RNP-0.3 NA. When local altimeter setting not received, use Terre Haute Rgnl altimeter setting; increase LPV DA to 1165, LNAV/VNAV DA to 1465 and all MDA 140 feet and increase LPV all Cats, LNAV Cat C, D visibility $\frac{1}{2}$ SM, LNAV/VNAV all Cats and Circling C and D visibility $\frac{1}{2}$ SM. For inoperative MALSR when using Terre Haute Rgnl altimeter setting; increase LPV all Cats visibility $\frac{1}{2}$ mile. Baro-VNAV and VDP NA when using Terre Haute Rgnl altimeter setting. Circling to Rwy 6/24 NA at night.

MALSR



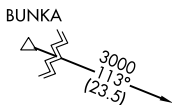
MISSED APPROACH:
Climb to 3000 direct
ITYEF and hold.

ASOS 134.525	HULMAN APP CON 128.025 339.8	BLOOMINGTON TOWER ★ 120.775 (CTAF) 0	GND CON 121.9	UNICOM 122.95
-----------------	---------------------------------	---	------------------	------------------

MISSED APCH FIX

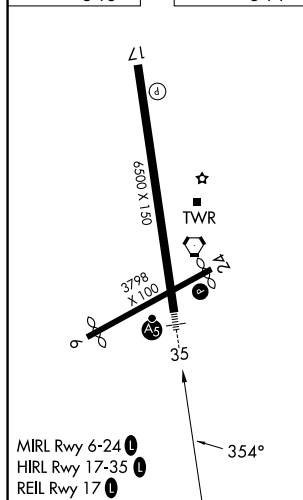


Procedure NA for arrivals at OOM VORTAC
via V305 northeast bound.

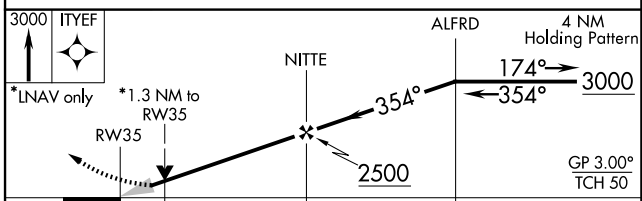
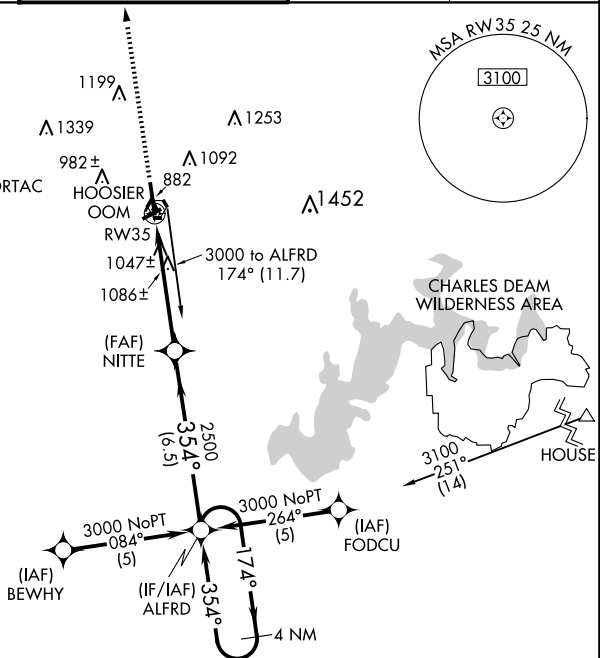


Procedure NA for arrivals at BUNKA
via V243 northbound.

ELEV	846		TDZE	844
------	-----	--	------	-----



BLOOMINGTON, INDIANA
Amdt 1B 04NOV21



		1.3 NM		3.7 NM		6.5 NM			
CATEGORY		A		B		C		D	
LPV	DA	1044-1½				200 (200-½)			
LNAV/ VNAV	DA	1344-1¼				500 (500-1¼)			
LNAV	MDA	1300-½ 456 (500-½)				1300-¾ 456 (500-¾)		1300-1 456 (500-1)	
CIRCLING		1380-1 534 (600-1)		1400-1 554 (600-1)		1400-½ 554 (600-½)		1620-2½ 774 (800-2½)	

BLOOMINGTON, INDIANA
Amdt 1B 04NOV21

39°09'N-86°37'W

MONROE COUNTY (BMG)
RNAV (GPS) RWY 35