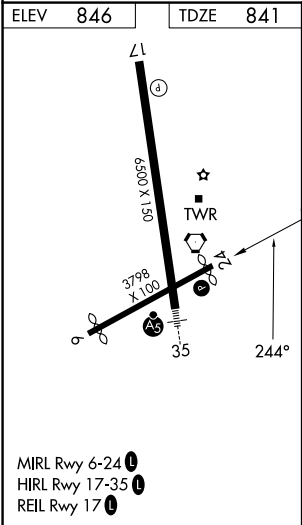
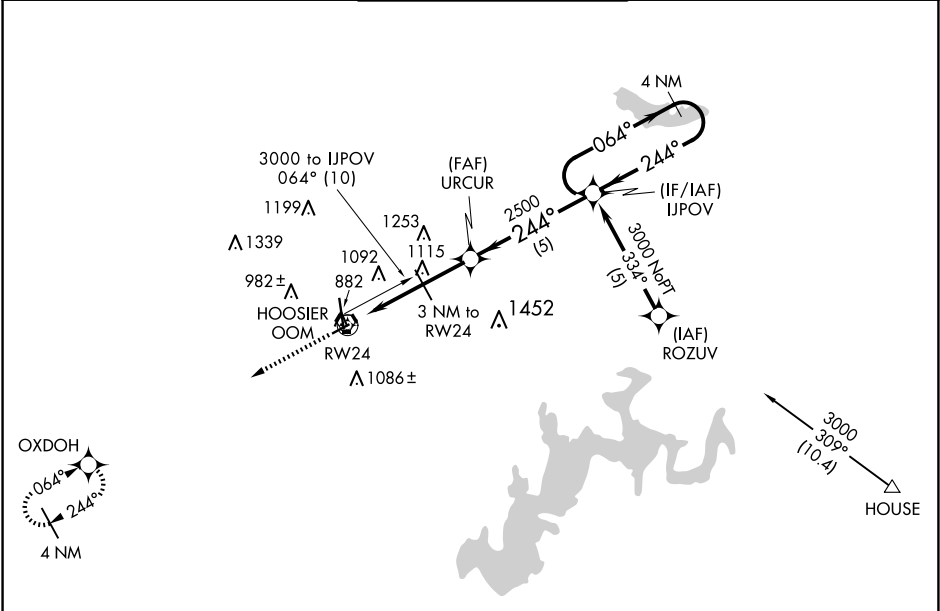


APP CRS 244°	Rwy Ldg TDZE Apt Elev 3576 841 846	RNAV (GPS) RWY 24		
			MONROE COUNTY (BMG)	

RNP APCH.		MISSED APPROACH: Climb to 3000 direct OXDOH WP and hold.
<div><div>▼</div><div>▲</div></div>	Rwy 24 helicopter visibility reduction below 1 SM NA. Procedure NA at night. When local altimeter setting not received use Terre Haute Rgnl altimeter setting and increase all MDA 140 feet; increase LNAV Cat C/D ¼ mile.	

ASOS 134.525	HULMAN APP CON 128.025 339.8	BLOOMINGTON TOWER ★ 120.775 (CTAF) 0	GND CON 121.9	UNICOM 122.95
-----------------	---------------------------------	---	------------------	------------------



3000	OXDOH	VGSI and descent angle not coincident (VGSI Angle 4.00/TCH 37).		IJPOV	4 NM Holding Pattern
RW24		3 NM to RW24	URUR	2500	064° ← 244° 3000
1840		3.06° TCH 31			
3 NM		2 NM	5 NM		
CATEGORY	A	B	C	D	
LNAV MDA	1320-1	479 (500-1)	1320-1¼ 479 (500-1¼)	1320-1½ 479 (500-1½)	