

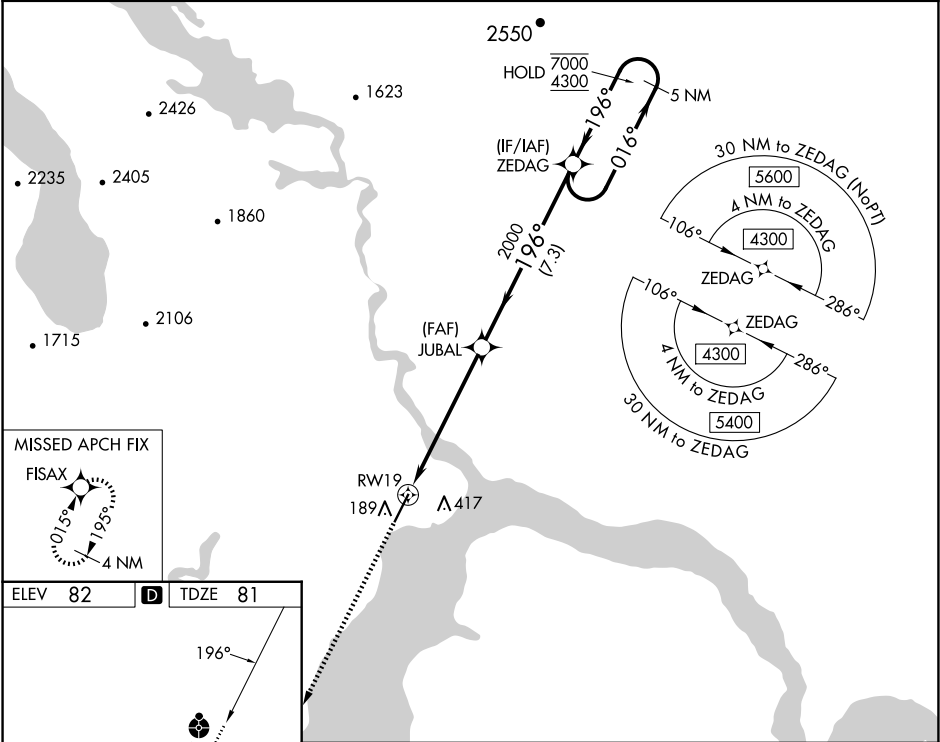
APP CRS	Rwy Idg	6400
196°	TDZE	81
	Apt Elev	82

RNAV (GPS) Z RWY 19

DILLINGHAM (DLG)(PADL)

RNP APCH - GPS.	ODALS	MISSED APPROACH: Climb to 2600 direct FISAX and hold.
<div><div>▼</div><div>▲</div></div> <div>Circling NA east of Rwy 1-19. When local altimeter setting not received, use Manokatak altimeter setting and increase all MDAs 40 feet and LNAV visibility Cat C/D ½ SM. For inop ALS, increase LNAV Cat C/D visibility to 1¾ SM. Inop table does not apply to LNAV Cats A/B. Inop table does not apply when using Manokatak altimeter setting. Rwy 19 helicopter visibility reduction below ¾ SM NA. VDP NA when using Manokatak altimeter setting.</div>	<div><div>⋮</div><div>⬇</div></div>	

AFIS 125.0	ANCHORAGE CENTER 132.75 282.35	DILLINGHAM RADIO 123.6 (CTAF) 0
---------------	-----------------------------------	------------------------------------



2600

FISAX

RW19

JUBAL

ZEDAG

5 NM Holding Pattern

016°

196°

7000

4300

1.4 NM

4.5 NM

7.3 NM

CATEGORY	A	B	C	D
LNAV MDA	560-1	479 (500-1)	560-1¼	479 (500-1¼)
CIRCLING	560-1	478 (500-1)	700-1¾ 618 (700-1¾)	700-2 618 (700-2)

REIL Rwy 19

HIRL Rwy 1-19