

WAAS CH 82025 W01A	APP CRS 015°	Rwy Idg TDZE 82 Apt Elev 82
--	------------------------	---

RNAV (GPS) Z RWY 1

DILLINGHAM (DLG)(PADL)

RNP APCH - GPS.

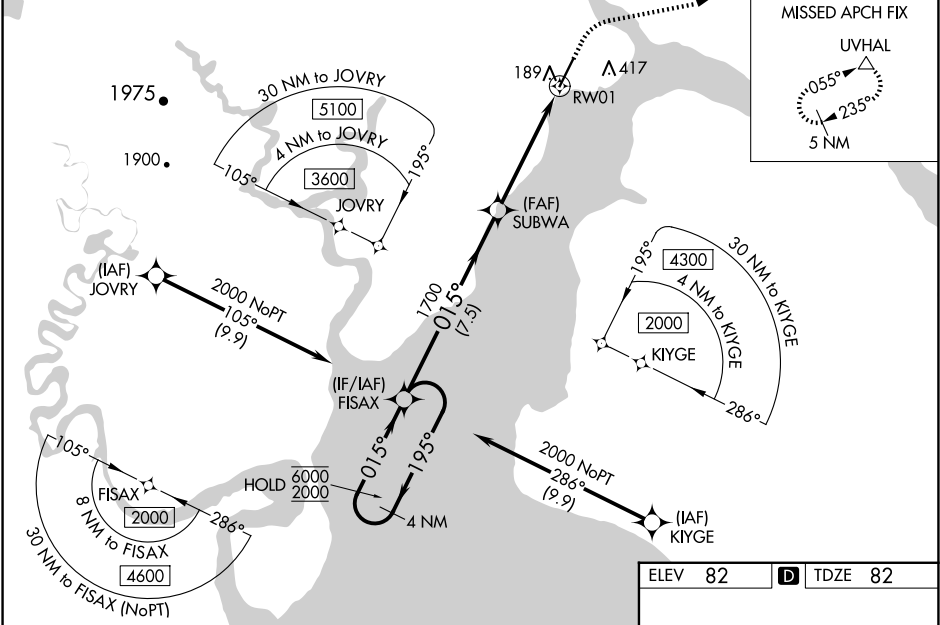
▼

⚠

Circling NA east of Rwy 1-19. For uncompensated Baro-VNAV systems, procedure NA below -20°C or above 54°C. Rwy 1 helicopter visibility reduction below ¾ SM NA. Baro-VNAV and VDP NA when using Manokotak altimeter setting. When local altimeter setting not received, use Manokotak altimeter setting and increase LPV DA to 367 feet; increase LNAV/VNAV DA to 486 feet and all visibilities ½ SM. Increase all MDAs 40 feet and LNAV visibility Cat C/D ½ SM.

MISSED APPROACH: Climb to 600 then climbing right turn to 2000 direct UVHAL and hold.

AFIS 125.0	ANCHORAGE CENTER 132.75 282.35	DILLINGHAM RADIO 123.6 (CTAF) 0
----------------------	--	---



4 NM Holding Pattern		FISAX	600	2000	UVHAL
6000		195°	015°	015°	△
2000					
GP 3.00°					
TCH 45					
		7.5 NM	3.5 NM	1.4 NM	
CATEGORY		A	B	C	D
LPV DA		332-1		250 (300-1)	
LNAV/VNAV DA		451-1		369 (400-1)	
LNAV MDA		580-1 498 (500-1)		580-1¾ 498 (500-1¾)	
CIRCLING		580-1 498 (500-1)		700-1¾ 618 (700-1¾) 700-2 618 (700-2)	

