

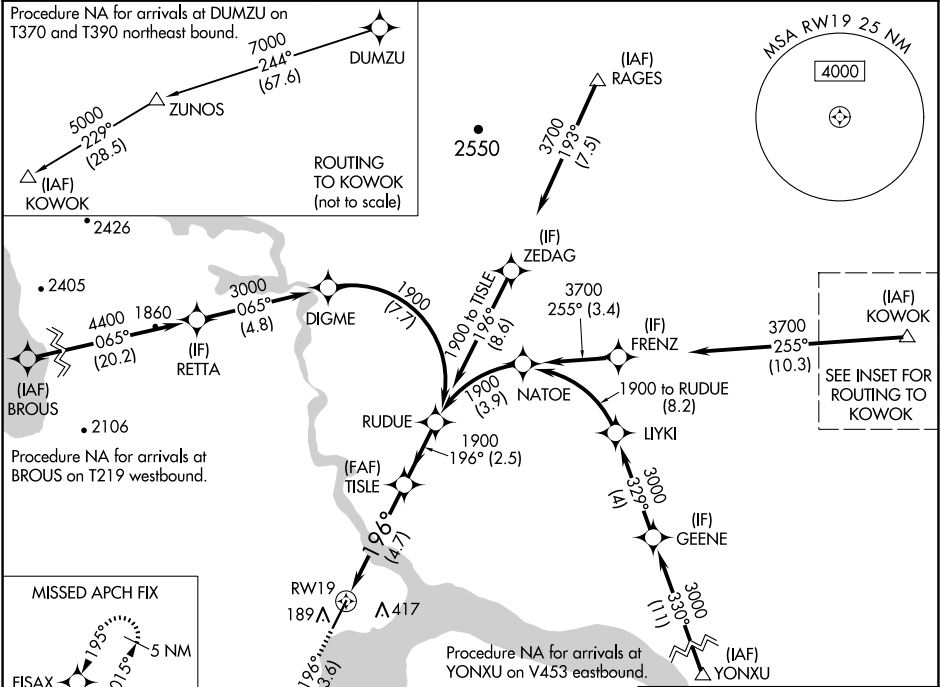
APP CRS	Rwy Idg	6400
196°	TDZE	81
	Apt Elev	82

RNAV (RNP) Y RWY 19

DILLINGHAM (DLG)(PADL)

RNP AR APCH - GPS.	ODALS	MISSED APPROACH: Climb to 5000 on track 196° to FISAX and hold, continue climb-in-hold to 5000.
▼ For uncompensated Baro-VNAV systems, procedure NA below -25°C or above 54°C. Inop table does not apply to RNP 0.10 and RNP 0.30. For inop ALS, increase RNP 0.20 Cat A and B visibility to 1½ SM.		

AFIS 125.0	ANCHORAGE CENTER 132.75 282.35	DILLINGHAM RADIO 123.6 (CTAF) 0
---------------	-----------------------------------	------------------------------------



5000	FISAX	VGSI and RNAV glidepath not coincident (VGSI Angle 3.00/TCH 57).	ELEV 82	TDZE 81
↑ tr 196°				
See planview for multiple IF locations.				
RW19	TISLE	RUDUE		
	1900	1900		
	196°	1900		
	4.7 NM	2.5 NM		
CATEGORY	A	B	C	D
RNP 0.10 DA	429-1	348 (400-1)		NA
RNP 0.20 DA	468-1	387 (400-1)		NA
RNP 0.30 DA	596-1½	515 (600-1½)		NA
AUTHORIZATION REQUIRED				
REIL Rwy 19 HIRL Rwy 1-19 0				